

ANNUAL REPORT FOR THE YEAR ENDING JUNE 30, 2010



TOWN MEETING: TUESDAY, MARCH 1, 2011

ROXBURY, VERMONT

Population.....576 (2000 U.S. Census Data)
Area 25,984 acres, Altitude 1,007 feet
Chartered August 6, 1781

Town Clerk.....	485-7840
Town Treasurer and Selectboard Assistant.....	485-7860
FAX Number.....	485-9160
E-mail	
Town Office.....	townrox@tds.net
Town Auditors	roxauditors@tds.net
Town Listers	roxlisters@tds.net
Web Address.....	www.roxbury.govoffice2.com

Town Clerk.....Tuesday–Friday 9AM-12NOON & 1-4PM

Selectboard Assistant..... Tuesday-Friday 8AM-12NOON & 1-4PM

Town Treasurer.....By Appointment Only

Assistant Treasurer..... Tuesday-Friday 8AM-12NOON & 1-4PM

HOURS ARE SUBJECT TO CHANGE WITHOUT NOTICE

Selectboard meets the first and third Monday of every month at 7:00PM in the Town offices. If meeting falls on a holiday, check bulletin board at Town office for alternate meeting time.

School Directors meet the second Monday of every month at 5:30 PM in the Roxbury Village School.

Roxbury Auditors meet once a month, check bulletin board at Town Office for meeting time.

**Roxbury Free Library Hours: Tuesday 10AM-12NOON (story hour at 10:30AM)
2PM-6PM
Thursday 2PM-7PM
Saturday 10AM-1PM**

Forest Fire Warden & Roxbury Fire Department.....485-6555

TO REPORT A FIRE OR OTHER EMERGENCIES, CALL.....911

Cover: Roxbury Volunteer Fire Department Engine in the 2010 Annual Fourth of July Parade

This Town Report is dedicated to William Ray.



William "Bill" Ray was born in Roxbury and grew up on the Oxbow Road family homestead. His long career has included being Road Commissioner, working at the State Fish Hatchery, much volunteer work including for the Senior Center, Cemetery Association, Roxbury United Church of Christ, Roxbury Literacy Team, and Roxbury Historical Society. He is a regular attendee and contributor to the monthly potluck suppers at the the Church, and Community Center. He has special skill with old tools, using a shaving horse to make hand-tool handles and wooden spoons. He has been a wonderful attraction at the Tunbridge World's Fair, hewing beams from logs at the Antique Hill section of the fair.

Roxbury is very fortunate to have such a citizen as Bill Ray.

ANNUAL TOWN MEETING ARTICLES WARNING OF 2011 TOWN MEETING

The legal voters of the Town of Roxbury are hereby notified and warned to meet in the Roxbury Town Hall on Tuesday, March 1, 2011 at 10:00 a.m. to vote on the following articles. (Voting for all Australian Ballot articles will be held on Tuesday, March 1, 2011 from 10:00 a.m. to 7:00 p.m.)

- Art. 1. To elect all officers by Australian Ballot.
- Art. 2. To hear and act upon the reports of the Town Officers.
- Art. 3. To vote that the Treasurer is paid from the General Fund.
- Art. 4. Will the voters approve the collection of taxes on real estate in two (2) equal installments payable to the Collector of Current Taxes on the fourth Saturday of August 2011 and the fourth Saturday of February 2012, with interest of one percent (1%) per month, or fraction thereof, on the unpaid taxes after each installment due date?
- Art. 5. Will the voters approve the sum of \$385,796.00 for the operation and maintenance of Town roads?
- Art. 6. Will the voters approve the sum of \$155,136.00 for the operation of the Town Administrative functions? This does not include any funds that may be approved in any other article.
- Art. 7. Shall the Roxbury Voters approve the transfer of 2008-2009 Fiscal Year and 2009-2010 Fiscal Year general government surplus funds into a Municipal Building Repair Fund for the maintenance and repairs of municipal buildings?
- Art. 8. Will the voters approve the borrowing of funds not to exceed \$100,000.00 for a five year period for the purchase of a new highway department truck.
- Art. 9. Will the voters approve the sum of \$2,000.00 for the Community Hall Capital Improvement Fund?
- Art. 10. Will the voters approve the sum of \$14,895.00 for the Roxbury Volunteer Fire Department?
- Art. 11. Will the voters approve the sum of \$7,000.00 for the Roxbury Volunteer Fire Department Truck Capital Account?
- Art. 12. Will the voters approve the sum of \$12,000.00 for the Roxbury Free Library, to be administered by the Trustees?
- Art. 13. Shall the Town of Roxbury vote to elect its Town Clerk for a three year term starting at the 2012 Annual Meeting?

- Art. 14. Shall the Town of Roxbury vote to elect its Town Treasurer for a three year term starting at the 2012 Annual Meeting?
- Art. 15. Will the voters continue the tax free status of the Third Branch Park?
- Art. 16. Shall the Town of Roxbury change the percentage of voters required to sign a petition for reconsideration of rescission required on a petition for reconsideration or rescission from five (5) percent up to ten (10) percent of the legal voters?
- Art. 17. Shall the Town Voters authorize expenditure of \$300.00 for the Central Vermont Community Action Council, Inc., helping people achieve economic sufficiency and supporting individual/family development by alleviating the effects of poverty; assisting people out of poverty, and advocating for economic justice?
- Art. 18. Shall the voters authorize the expenditure of \$400.00 for the Greater Northfield Coalition Council-the Drug Free Partnership, preventing alcohol, tobacco, and other drug use by youth in Northfield and Roxbury?
- Art. 19. Shall the town voters authorize expenditures for Central Vermont Home Health and Hospice in the amount of \$750.00, a full service Visiting Nurse Association providing comprehensive home health and hospice care to all Central Vermonters regardless of ability to pay, geographic remoteness, or complexity of health care needs; health promotion & long term care services?
- Art. 20. Shall the town voters authorize expenditures for Battered Women's Services and Shelter in the amount of \$100.00, a community-based organization dedicated to ending domestic abuse?
- Art. 21. Shall the town voters authorize expenditures for Family Center of Washington County in the amount of \$200.00, fostering positive growth and development of young children and their families by offering safe, nurturing programs and services for children, families and service providers?
- Art. 22. Shall the town voters authorize expenditures for Sexual Assault Crisis Team of Washington County in the amount of \$100.00, advocacy for female and male victims of sexual violence, their family members, spouses, and friends; includes emotional, legal, and medical support, shelter, training and 24-hour Hotline?
- Art. 23. Shall the town voters authorize expenditures for Vermont Association for the Blind and Visually Impaired in the amount of \$500.00, since 1926, enabling Vermonters with vision problems, whether blindness or impairment, to achieve and maintain independence?
- Art. 24. Shall the town voters authorize expenditures for Good Beginnings of Central Vermont in the amount of \$50.00, since 1991 volunteer mothers of all ages have been offering ongoing support, education, and advocacy through home visits to all birth and adoptive families in Central Vermont?

- Art. 25. Shall the town voters authorize expenditures for People's Health and Wellness Clinic in the amount of \$200.00, providing primary health care and wellness education to the uninsured and underinsured community members of Central Vermont who cannot otherwise afford these services?
- Art. 26. Shall the town voters authorize expenditures for Washington County Youth Service Bureau/Boys & Girls Club in the amount of \$250.00, Cityscape after-school program; counseling; drug/alcohol treatment; help for runaway/homeless youth; support for teen parents; teen center; reentry program for young offenders; 24-hour crisis intervention; and more?
- Art. 27. Shall the town voters authorize expenditures for RSVP (Retired Senior and Volunteer Program) in the amount of \$100.00, helping meet community needs by placing RSVP volunteers in services provided by area community non-profit organizations, and supporting those organizations in the field of volunteer management?
- Art. 28. Shall the town voters authorize expenditures for Central Vermont Community Land Trust in the amount of \$200.00, creating and sustaining safe, decent and affordable housing and building strong and diverse communities?
- Art. 29. Shall the town voters authorize expenditures for Central Vermont Council on Aging in the amount of \$700.00, working to keep elders aging successfully and living independently in their homes and communities as long as possible?
- Art. 30. Shall the town voters authorize expenditures for Green Mountain Transit Agency in amount of \$387.00, meeting the special needs of transit dependent citizens including seniors, persons with disabilities, low-income residents and the general public?
- Art. 31. To transact any other proper business to be brought before said meeting.

Dated at Roxbury, County of Washington and State of Vermont, this 20th day of January, 2011.

Roxbury Selectboard
Shawn Neun, Chairman
Timothy Martin Sr.
David McShane

Notice: The last day to register to vote to be eligible to participate at this meeting is Wednesday, February 23, 2011 at the Town Clerk's Office. The Town Clerk's Office will be open on the 23rd from 9:00 A.M. – 5:00 P.M. Requests for mailed absentee ballots for this meeting must be received by Monday, February 28, 2011 no later than 5:00 P.M. Further information on voter registration and absentee voting or any other appropriate information may be obtained from the Town Clerk during normal business hours.

ROXBURY TOWN SCHOOL DISTRICT
WARNING OF 2011 ANNUAL MEETING

The legal voters of the Roxbury Town School District are hereby warned to meet in the Roxbury Town Hall on March 1, 2011 10:00am to act upon the following articles (Voting for all Australian Ballot articles will be held on Tuesday, March 1, 2011 from 10:00am to 7:00pm):

Article 1: To elect a School District Moderator.

Article 2: To elect a School Director for a term of 3 years (Australian Ballot)

Article 3: To elect a School Director for the remaining one year of a 3-year term (Australian Ballot)

Article 4: To elect a School Treasurer for 1 year (Australian Ballot)

Article 5: To hear and act upon reports of the Town School District.

Article 6: Shall the voters of the Roxbury Town School District approve the appropriation of \$1,540,297.00 necessary for the support of its school and secondary students for the year beginning July 1, 2011? (Australian Ballot)

Article 7: Shall the voters of Roxbury authorize the Roxbury Town School District to borrow money, in anticipation of revenue, not to exceed anticipated revenue for the 2011-2012 school year? (According to VSA Title 16, Section 562) (Australian Ballot)

Article 8: Shall the voters of the Roxbury Town School District authorize the transfer of twenty percent (20%) of any surplus funds from the 2010-2011 budget to the maintenance reserve fund? (Australian Ballot)

Article 9: Shall the voters of the Roxbury Town School District authorize the transfer of forty percent (40%) of any surplus funds from the 2010-2011 budget to a reserve fund for tax reduction in the 2013-2014 budget? (Australian Ballot)

Article 10: To transact any other business proper to be brought before said meeting.

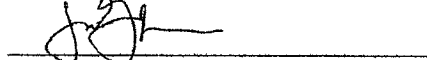
Dated at Roxbury, Vermont on this 10th day of January, 2011.



Deborah VanNess, Chair



David Larcombe, Vice-Chair



Jon Guiffre, Clerk

Notice: The last day to register to vote to be eligible to participate at this meeting is February 23, 2011 at 5:00pm at the Town Clerk's office. Requests for mailed absentee ballots for this meeting must be received by February 28, 2011 at 5:00pm. Further information on voter registration and absentee voting or any other appropriate information may be obtained from the Town Clerk during normal business hours.

Received at the Town Clerk's Office for record before posting on January 14, 2011 at 8:55 a.m.

ATTEST: 
Tammy Legacy, Town Clerk

Elected Town Officials 2010

Moderator	Lucinda Sullivan	2011
School District Moderator	Lucinda Sullivan	2011
Town Clerk	Tammy Legacy	2011
Town Treasurer	Anne Maxham	2011
School Treasurer	Tammy Legacy	2011
Selectmen	Tim Martin, Sr.	2011
	David McShane	2012
	Shawn Neun (Chair)	2013
School Directors	Deborah Van Ness (Chair)	2011
	Jon Guiffre (appointed)	2011
	Amanda Melville (resigned)	2012
	David Larcombe	2013
Listers	Harold French	2011
	Michael George (appointed)	2011
	Sally Archer	2013
Auditors	E. Frances French	2011
	Linda Maney	2012
	Joan Leary (Chair)	2013
Collector of Current Taxes	Tammy Legacy	2011
Collector of Delinquent Taxes	Anne Maxham	2011
First Constable	Clarence Baker	2011
Second Constable	Fred Kingsley	2011
Grand Juror	Rich Smith	2011
Town Agent	Steve Twombly	2011
Library Trustees	Jane Pincus (Chair)	2011
	Danielle Pipher	2011
	Sally Kirn	2012
	Chris Dorer	2013
	Shelly Brown (resigned)	2011
	Vacant	2011
Justices of the Peace	Gerald D'Amico	2013
	Gloria Gerdes	2013
	Ronald Jerry	2013
	Gary Morse	2013
	Charles Slocum	2013

Appointed Town Officials

Tree Warden	Steve Lusk	2011
Road Commissioner	David McShane	2011
Town Health Officer	Lorraine Day	2011
Town Service Officer	Claire Chomentowski	2011
Assistant Clerk	Trish Brown (resigned)	2011
	Joyce Brousseau	2011
Assistant Treasurer	Tammy Legacy	2011
Mad River Management Resource		
Alliance Representative	David McShane	2011
Regional Planning Commissioner	Tom Frazier (resigned)	2011
Green-up Coordinator	Claire Chomentowski	2011
Pound Keeper	Baroffio's Kennel	2011
Energy Coordinator	Carlos Montero	2011
Emergency Management Director	Kevin Pecor	2011
Forest Fire Warden	Tim Martin, Sr.	2011
E911 Coordinator	Karen Baker (resigned)	2011
	Alan Waterman (appointed)	2011
Planning Commissioners	Kim Livellara (Chair)	
	Claire Chomentowski	
	Ed Dickinson	
	Linda Maney	
	Frank Morgano	
	William Ray	
Fence Viewers	Reginal Brown, Sr.	2011
	Scott Legacy	2011
	Mark Gerdes	2011
Inspector of Lumber and Shingles	William Ray	2011
Chairman of Civil Defense	Steve Twombly	2011
Website Administrator	Joyce Brousseau	2011

Town Employees

Road Crew	Loren Bent (Foreman)
	Roger Thomas
	Stephen Bell (per diem)
	Clarence Baker (per diem)
Selectboard Assistant	Tammy Legacy

Library Trustee Employee

Town Librarian	Susan D'Amico
----------------	---------------

SELECTBOARD REPORT

At the first meeting the Selectboard elected Shawn Neun as chairman, Tim Martin as Vice-chairman and Dave McShane was re-appointed as Road Commissioner. The Selectboard typically meets on the first and third Monday of each month at 7:00 P.M. at the Roxbury Town office. Citizens are encouraged to attend the meetings.

The fiscal year 2009/2010 ended with a budget surplus of approximately \$61,149.00. This was due to cost-cutting in all areas, but mostly in the highway department. There is approximately \$41,102.00 in surplus for highway funds and approximately \$20,047.00 in surplus for general government funds. The Selectboard has been making hard choices about the surplus and the best way to allocate them. We have worked hard on an equipment budget to put in place. This is needed to help out on future budget planning for the Town. The Capital Equipment Plan that was approved by the Selectboard is following this report.

The road crew has done a great job this past year and the Town is in a better situation because of this. The Selectboard hired Steve Bell from Roxbury as the back-up snow plow driver. The road crew, Loren Bent and Roger Thomas placed 2nd place in the Vermont Municipal Highway Association Snowplow Contest and also placed 1st in a Safety Award.

This year a grinding stone was dug out of the weeds and small trees from the Town Garage and placed in front of the Town Office. A new flag pole was also installed at the town office to replace the old rusty one that was begging to fall apart. The Selectboard also felt it would be a great idea for Roxbury residents and local businesses to sponsor flags mounted on the telephone poles in town. We did not have any trouble finding people to donate for this project during these difficult economic times. We are also hoping to have this idea grow more in the next few years by putting up more and installing them in East Roxbury. The Selectboard wants to thank the sponsors and TDS for the support they gave in this project. A list of sponsors is enclosed in the Town Report.

Green-Up Day this year was a good day. We looked at different ways to help people get rid of old tires by offering a tire drop-off at the Town Garage during Green-Up Day. The Town spent \$883.30 for Green-Up Day that included tires, trash and food for residents. There was \$212.00 paid to the Town for dropping off tires, and \$500.00 from a Green-Up Day Grant. The cost to the Town for this successful event was \$171.30. Tim Martin volunteered his snack shack for the cooking of hotdogs & cheese burgers the Town paid for.

This year had some hard choices that were made, such as the Town leaving the CVSWMD (Central Vermont Solid Waste Management District) and going to the MRRMA (Mad River Resource Management Alliance). The decision to leave the CVSWMD was due to the cut in services and the increase in cost. The decision to join the MRRMA was because the services were the same and the cost was less. The Selectboard received a letter from the CVSWMD that said we were able to leave them and not be liable for the entire debt that was accrued. Roxbury was able to leave CVSWMD for \$100.00.

The Town also went through a town-wide reappraisal. The end result has been very interesting with many people voicing their opinions on the reappraisal. The Town Listers have worked very hard during this process. The 2011 Common Level of Appraisal (CLA) will be 91.64%.

The Town office had some work done in the basement due to water entering through the foundation. As a caution, the Selectboard had all the sheetrock removed from the stairway going down to the basement and the ceiling in the furnace room. Problems will need to be addressed in the near future.

The Selectboard appointed an Energy Committee. The committee was able to get four free audits for the municipal buildings, which were the Town Office, Community Hall/Senior Center, Town Garage and Town Library. The Selectboard would like to use this information to help with making the buildings more energy efficient.

The Selectboard approved a one hour increase in the Assistant Town Clerk, Joyce Brousseau's work week, to work on the Town website and keep it updated throughout the year. Joyce is revamping the website to make it easier to use and more informative. The Town's website address is www.roxbury.govoffice2.com.

Roxbury Selectboard,

Shawn Neun, Chairman

Timothy Martin, Vice-Chairman

David McShane, Road Commissioner

CAPITAL EQUIPMENT PLAN

The goal of the Selectboard is to replace the highway equipment on a twenty (20) year rotation.

2010	Four Wheel Drive Dump Truck
2013	New Four Wheel Drive Pickup with plow and sander
2016	Four Wheel Loader
2018	Two Wheel Drive Dump Truck
2020	All Wheel Drive Grader
2020	Four Wheel Drive Pickup with plow and sander
2023	New Two Wheel Drive Dump Truck
2027	New Four Wheel Drive Pickup with plow and sander

Approximate cost will be \$60,000 per year for the next twenty (20) years.

SPONSORS OF FLAGS

Wendy & Jack Cashman in memory of Granville (Mac) and Charlotte McCardell

Gavin & Alice Duncan in memory of Granville (Mac) and Charlotte McCardell

Frazier's Greenhouse in memory of Stanley Neun

Mark and Donna Gerdes (2 flags) in memory of Arthur Gerdes

Kathy Goodman in memory of Granville (Mac) and Charlotte McCardell

John Gross Trucking in memory of John and Marian Gross

Tim Martin in memory of Robert Martin Jr.

Midstate Asbestos in memory of Olin Maxham

Roxbury Country Store in memory of Robert (Bob) Leary

Roxbury Fire Fighters Association in memory of Carmie Messier Sr. and David Martin Sr.

Windridge Camp at Teela-Wooket in memory of Jeff Stone



For more of Roxbury's flags, see the back cover for some of the flags donated by the above sponsors. Thank you to Selectboard for spearheading this effort.

	Budget FY - 2010	Actual FY - 2010	Budget FY - 2011	Budget FY - 2012
Tax Revenues				
Current Taxes	\$1,326,322.47	\$1,180,383.82	\$1,408,483.24	\$432,882.00
VT HS-122 DOWNLOAD	\$0.00	\$0.00	\$135,491.47	\$0.00
VT Municipal Tax Adjustme	\$0.00	\$18,574.41	\$0.00	\$0.00
Delinquent Tax	\$0.00	\$115,301.62	\$0.00	\$0.00
Tax Interest	\$0.00	\$2,435.37	\$0.00	\$0.00
Delinq. Tax Interest	\$4,000.00	\$8,056.40	\$4,000.00	\$4,000.00
HS-131 Penalty	\$0.00	\$0.00	\$0.00	\$0.00
Tax Penalty	\$7,500.00	\$9,223.17	\$7,500.00	\$7,500.00
Railroad Tax	\$1,100.00	\$1,443.59	\$1,100.00	\$0.00
	-----	-----	-----	-----
	\$1,338,922.47	\$1,335,418.38	\$1,556,574.71	\$444,382.00
Revenue From State				
Highway	\$52,200.00	\$58,749.45	\$52,000.00	\$52,000.00
Forest & Parks	\$10,000.00	\$11,039.47	\$10,000.00	\$10,000.00
Current Use - State	\$23,000.00	\$32,435.00	\$23,000.00	\$26,000.00
Reappraisal/GL Maint	\$0.00	\$0.00	\$0.00	\$0.00
Paving Grant Income	\$0.00	\$0.00	\$0.00	\$0.00
	-----	-----	-----	-----
	\$85,200.00	\$102,223.92	\$85,000.00	\$88,000.00
Other Revenue				
Town Clerk's Fees	\$7,000.00	\$8,336.70	\$7,000.00	\$7,000.00
Ticket Revenue	\$0.00	\$238.50	\$0.00	\$0.00
Interest Income	\$800.00	\$927.01	\$400.00	\$400.00
CDs Interest	\$1,200.00	\$0.00	\$0.00	\$0.00
TD Banknorth Interest	\$0.00	\$0.00	\$0.00	\$0.00
M. Bank MoneyMarket Int.	\$0.00	\$1,947.48	\$800.00	\$800.00
Revenue from Reserve Fund	\$0.00	\$0.00	\$0.00	\$0.00
Proceeds of Long Term Deb	\$0.00	\$0.00	\$0.00	\$0.00
Animal Control Reimbursem	\$0.00	\$427.42	\$0.00	\$0.00
Donations for Flags	\$0.00	\$451.00	\$0.00	\$0.00
Miscellaneous Income	\$500.00	\$925.28	\$100.00	\$100.00
Highway Miscellaneous Inc	\$500.00	\$211.45	\$250.00	\$250.00
	-----	-----	-----	-----
	\$10,000.00	\$13,464.84	\$8,550.00	\$8,550.00
Total Revenues	-----	-----	-----	-----
	\$1,434,122.47	\$1,451,107.14	\$1,650,124.71	\$540,932.00
Total General Fund	-----	-----	-----	-----
	\$1,434,122.47	\$1,451,107.14	\$1,650,124.71	\$540,932.00

	Budget FY - 2010	Actual FY - 2010	Budget FY - 2011	Budget FY - 2012
General Government				
Payroll				
Assistant Clerk	\$4,950.00	\$4,479.75	\$4,950.00	\$5,537.00
Auditors	\$1,000.00	\$1,460.00	\$1,000.00	\$1,500.00
Town Clerk	\$13,104.00	\$13,020.00	\$13,624.00	\$13,896.00
Delinquent Tax Collector	\$1,500.00	\$1,500.00	\$1,500.00	\$1,500.00
Election-Civil	\$1,000.00	\$144.20	\$2,000.00	\$1,000.00
Housekeeping	\$800.00	\$465.03	\$800.00	\$800.00
Listers	\$1,500.00	\$8,275.00	\$2,000.00	\$5,000.00
Selectmen	\$2,000.00	\$1,958.37	\$2,000.00	\$2,000.00
Collector of Current Taxes	\$2,000.00	\$2,000.00	\$2,000.00	\$2,000.00
Selectboard Assistant	\$13,104.00	\$13,188.00	\$13,624.00	\$13,896.00
Town Treasurer	\$1,500.00	\$1,500.00	\$1,500.00	\$1,500.00
Comp FICA	\$2,800.00	\$3,199.91	\$3,000.00	\$3,000.00
Comp MCARE	\$650.00	\$748.55	\$700.00	\$700.00
Retirement	\$1,100.00	\$1,048.32	\$1,100.00	\$1,120.00
Health/Dental Ins.	\$17,000.00	\$16,685.75	\$17,000.00	\$11,500.00
Choice Care - General	\$0.00	\$0.00	\$0.00	\$5,157.00
Comp SUIVT	\$100.00	\$250.12	\$250.00	\$400.00
Worker's Comp	\$350.00	\$219.50	\$350.00	\$400.00
Total General Payroll	\$64,458.00	\$70,142.50	\$67,398.00	\$70,906.00
Town Office				
Postage	\$1,000.00	\$931.89	\$1,300.00	\$1,000.00
Supplies	\$2,200.00	\$2,344.56	\$2,200.00	\$2,200.00
Software	\$500.00	\$142.76	\$300.00	\$300.00
Advertising	\$750.00	\$415.31	\$750.00	\$750.00
Office Equipment	\$1,500.00	\$459.38	\$1,200.00	\$1,200.00
Tax Bills & Collection	\$700.00	\$1,036.21	\$700.00	\$1,000.00
Town Report	\$2,500.00	\$1,100.60	\$2,500.00	\$1,300.00
Tax Map - Grand List	\$1,200.00	\$1,026.89	\$1,000.00	\$1,200.00
Service Contract	\$2,000.00	\$1,813.94	\$2,000.00	\$2,000.00
Backup Service Contract	\$515.00	\$1,030.45	\$540.00	\$1,100.00
Electricity	\$1,200.00	\$871.13	\$900.00	\$900.00
Telephone	\$2,600.00	\$1,720.46	\$2,200.00	\$2,200.00
Fuel	\$4,000.00	\$2,552.36	\$3,000.00	\$3,000.00
Roxbury Planning	\$300.00	\$0.00	\$300.00	\$300.00
Misc	\$400.00	\$383.20	\$400.00	\$400.00
Total Town Office	\$21,365.00	\$15,829.14	\$19,290.00	\$18,850.00
Public Safety				
Law Enforcement	\$0.00	\$0.00	\$0.00	\$0.00
Northfield Ambulance	\$3,500.00	\$3,500.00	\$4,500.00	\$4,500.00
Fire Dispatching	\$1,120.00	\$0.00	\$1,177.00	\$1,236.00
EMS Dispatching	\$2,278.00	\$3,386.09	\$2,392.00	\$2,512.00
Total Public Safety	\$6,898.00	\$6,886.09	\$8,069.00	\$8,248.00
General Expenses				
Deficit Reduction	\$5,645.00	\$5,645.00	\$0.00	\$0.00
Mileage	\$350.00	\$353.10	\$500.00	\$500.00
Street Lights	\$3,400.00	\$3,141.17	\$3,400.00	\$3,400.00

	Budget FY - 2010	Actual FY - 2010	Budget FY - 2011	Budget FY - 2012
Historical Society	\$200.00	\$156.62	\$200.00	\$200.00
Senior Ctr/Community Hall	\$0.00	\$0.00	\$2,500.00	\$2,500.00
Energy Committee	\$0.00	\$0.00	\$0.00	\$200.00
Pound Keeper	\$50.00	\$0.00	\$50.00	\$50.00
Sewage Ordinance	\$0.00	\$0.00	\$0.00	\$0.00
Constable's Expenses	\$500.00	\$500.00	\$500.00	\$500.00
League of C & T	\$1,027.00	\$1,027.00	\$1,223.00	\$1,248.00
Solid Waste Mgt.	\$1,760.00	\$1,720.50	\$1,709.00	\$0.00
CV Regional Plan.	\$576.00	\$575.70	\$637.00	\$637.00
Dues	\$125.00	\$140.00	\$125.00	\$195.00
Mad River Resource Dues	\$0.00	\$0.00	\$0.00	\$1,212.00
Legal	\$3,000.00	\$828.51	\$3,000.00	\$3,000.00
Washington Co. Taxes	\$6,470.00	\$6,467.00	\$6,522.00	\$5,085.00
Seminars & Training	\$1,300.00	\$1,055.00	\$1,300.00	\$1,600.00
Computer Services	\$1,500.00	\$796.00	\$1,000.00	\$1,000.00
CV Humane Society	\$0.00	\$0.00	\$0.00	\$0.00
Reappraisal	\$0.00	\$0.00	\$0.00	\$0.00
N. VT RC&D	\$0.00	\$0.00	\$75.00	\$75.00
Memorial Day-Cem. Flags	\$700.00	\$277.92	\$500.00	\$500.00
Assessor	\$2,600.00	\$2,023.00	\$2,200.00	\$500.00
Flags	\$0.00	\$703.42	\$0.00	\$0.00
Cemetery Mowing	\$0.00	\$0.00	\$0.00	\$4,500.00
Bonds & Insurance	\$7,225.00	\$5,401.00	\$7,225.00	\$6,000.00
Accounting	\$2,000.00	\$2,000.00	\$2,000.00	\$2,000.00
Railroad Rental	\$1,120.00	\$0.00	\$0.00	\$0.00
Building Maintenance	\$1,500.00	\$1,638.19	\$1,500.00	\$1,500.00
Building Repair Fund	\$1,500.00	\$1,500.00	\$1,500.00	\$2,000.00
Building Remodel Project	\$0.00	\$0.00	\$0.00	\$0.00
Town Office Project	\$0.00	\$0.00	\$0.00	\$0.00
Green Up Day Expenses	\$1,000.00	\$671.30	\$1,000.00	\$1,000.00
Green Up Vermont	\$0.00	\$0.00	\$50.00	\$50.00
Interest for Credit Line	\$2,000.00	\$0.00	\$1,000.00	\$1,000.00
Interest - Reappraisal	\$1,200.00	\$1,067.50	\$1,575.00	\$1,005.00
Interest - Office Project	\$900.00	\$711.66	\$820.00	\$650.00
Debt Principal - Reappraisal	\$7,400.00	\$7,400.00	\$9,000.00	\$9,000.00
Debt Principal - Office Project	\$2,800.00	\$2,800.00	\$2,800.00	\$2,800.00
Debt Principal - Deficit	\$0.00	\$0.00	\$0.00	\$0.00
Interest - Deficit Reduction	\$0.00	\$0.00	\$0.00	\$0.00
Debt Principal-Library	\$3,000.00	\$3,000.00	\$3,000.00	\$3,000.00
Interest-Library Loan	\$420.00	\$420.00	\$300.00	\$225.00
Tax Abatements & Appeals	\$0.00	\$0.00	\$0.00	\$0.00
Animal Care Expenses	\$0.00	\$0.00	\$0.00	\$0.00
Total General Expenses	\$61,268.00	\$52,019.59	\$57,211.00	\$57,132.00
Total General Government	\$153,989.00	\$144,877.32	\$151,968.00	\$155,136.00
Highway				
Highway Payroll				
Highway	\$100,275.00	\$80,575.67	\$90,000.00	\$90,000.00
Comp FICA	\$6,250.00	\$4,623.13	\$6,250.00	\$6,250.00
Comp MCARE	\$1,500.00	\$1,081.31	\$1,500.00	\$1,500.00

	Budget FY - 2010	Actual FY - 2010	Budget FY - 2011	Budget FY - 2012
Retirement	\$4,000.00	\$2,986.72	\$3,150.00	\$3,150.00
Health/Dental Ins.	\$43,420.00	\$29,171.92	\$30,500.00	\$21,500.00
Choice Care - Highway	\$0.00	\$0.00	\$0.00	\$2,657.00
Comp SUIVT	\$500.00	\$254.20	\$500.00	\$500.00
Labor-Misc.	\$0.00	\$0.00	\$0.00	\$0.00
Worker's Comp	\$12,500.00	\$6,626.50	\$8,000.00	\$6,000.00
Total Highway Payroll	\$168,445.00	\$125,319.45	\$139,900.00	\$131,557.00
Materials				
Signs	\$500.00	\$1,800.77	\$750.00	\$2,000.00
Bridges	\$5,000.00	\$20.08	\$5,000.00	\$5,000.00
Culverts	\$5,000.00	\$3,956.83	\$5,000.00	\$5,000.00
Guardrails	\$0.00	\$0.00	\$5,000.00	\$5,000.00
Chloride	\$3,600.00	\$7,059.43	\$3,600.00	\$3,600.00
Gravel	\$40,000.00	\$54,003.49	\$40,000.00	\$40,000.00
Sand	\$32,000.00	\$32,000.00	\$38,000.00	\$38,000.00
Salt	\$2,800.00	\$1,668.65	\$2,800.00	\$2,800.00
Total Materials	\$88,900.00	\$100,509.25	\$100,150.00	\$101,400.00
Town Garage				
Electric	\$1,800.00	\$1,191.66	\$1,600.00	\$1,400.00
Telephone	\$550.00	\$486.13	\$550.00	\$550.00
Fuel Oil	\$5,113.00	\$2,937.80	\$4,250.00	\$4,250.00
Trash	\$450.00	\$74.61	\$0.00	\$0.00
Shop Maintenance	\$4,000.00	\$3,502.74	\$4,000.00	\$4,000.00
Total Town Garage	\$11,913.00	\$8,192.94	\$10,400.00	\$10,200.00
Equipment				
Training	\$270.00	\$120.00	\$270.00	\$270.00
Vehicle & Bldg Insurance	\$4,550.00	\$5,911.50	\$6,500.00	\$10,059.00
Gas	\$175.00	\$70.45	\$175.00	\$175.00
Diesel	\$28,000.00	\$16,617.22	\$25,000.00	\$25,000.00
Vehicle Maint/Repair	\$22,000.00	\$0.00	\$29,000.00	\$29,000.00
Mack Truck Repair	\$0.00	\$5,759.95	\$0.00	\$0.00
Loader Repair	\$0.00	\$1,713.64	\$0.00	\$0.00
International Truck Repair	\$0.00	\$1,199.79	\$0.00	\$0.00
Grader Repair	\$0.00	\$6,960.80	\$0.00	\$0.00
York Rake	\$0.00	\$0.00	\$0.00	\$0.00
Winter Equipment	\$0.00	\$7,959.87	\$0.00	\$0.00
Chipper	\$0.00	\$0.00	\$0.00	\$0.00
International 2002	\$0.00	\$7,193.40	\$0.00	\$0.00
2005 Chevy Truck	\$0.00	\$3,794.20	\$0.00	\$0.00
Summer Equipment	\$0.00	\$171.21	\$0.00	\$0.00
2008 John Deere Backhoe	\$0.00	\$575.15	\$0.00	\$0.00
Vehicle Maint/Repair - Ot	\$0.00	\$0.00	\$0.00	\$0.00
Highways Equipment Fund	\$15,000.00	\$15,000.00	\$15,000.00	\$43,000.00
Interest - 2002 Int'l Loan	\$316.00	\$315.97	\$0.00	\$0.00
Debt Principal - 2002 Int'l Loan	\$10,930.00	\$10,926.00	\$0.00	\$0.00
Debt Principal-Backhoe	\$17,250.00	\$17,250.00	\$17,250.00	\$17,250.00
Interest-Backhoe	\$2,211.00	\$2,210.90	\$1,466.00	\$735.00
Equip/Tools/Misc.	\$2,000.00	\$3,418.47	\$2,500.00	\$2,500.00

	Budget FY - 2010	Actual FY - 2010	Budget FY - 2011	Budget FY - 2012
Welder Supplies	\$1,000.00	\$75.35	\$2,000.00	\$1,500.00
Shop Supplies	\$700.00	\$365.59	\$700.00	\$700.00
New Equipment Purchase	\$0.00	\$0.00	\$0.00	\$0.00
	-----	-----	-----	-----
Total Equipment	\$104,402.00	\$107,609.46	\$99,861.00	\$130,189.00
Hired Services				
Roadside Mowing	\$2,300.00	\$2,300.00	\$2,300.00	\$2,300.00
Cemetery Mowing	\$3,500.00	\$3,500.00	\$3,500.00	\$0.00
Paving	\$0.00	\$0.00	\$0.00	\$0.00
Pagers & Uniforms	\$2,800.00	\$2,672.17	\$2,800.00	\$2,800.00
Winter Equipment Hired	\$1,500.00	\$858.00	\$1,500.00	\$1,500.00
Summer Equipment Hired	\$0.00	\$726.59	\$700.00	\$700.00
Mileage	\$100.00	\$70.00	\$250.00	\$150.00
Special Projects	\$6,500.00	\$3,550.00	\$5,000.00	\$5,000.00
Building Remodel	\$0.00	\$0.00	\$0.00	\$0.00
	-----	-----	-----	-----
Total Hired Services	\$16,700.00	\$13,676.76	\$16,050.00	\$12,450.00
	-----	-----	-----	-----
Total Highway	\$390,360.00	\$355,307.86	\$366,361.00	\$385,796.00
Fire Dept				
Electricity	\$1,200.00	\$879.25	\$1,200.00	\$0.00
Telephone	\$400.00	\$411.88	\$400.00	\$0.00
Fuel - oil	\$2,800.00	\$1,390.00	\$2,000.00	\$0.00
Fuel - gas	\$400.00	\$111.88	\$500.00	\$0.00
Capital West Dispatching	\$0.00	\$0.00	\$0.00	\$0.00
Mutual Aid	\$200.00	\$200.00	\$200.00	\$0.00
Dues	\$145.00	\$0.00	\$145.00	\$0.00
Parts & Service	\$300.00	\$589.17	\$500.00	\$0.00
Training	\$400.00	\$0.00	\$400.00	\$0.00
Community Service	\$50.00	\$0.00	\$50.00	\$0.00
Supplies/Miscellaneous	\$100.00	\$69.88	\$100.00	\$0.00
Insurance	\$3,500.00	\$4,315.50	\$5,700.00	\$0.00
New Equipment Purchase	\$5,000.00	\$3,836.05	\$4,000.00	\$0.00
Interest Expense for Truck	\$0.00	\$0.00	\$0.00	\$0.00
Transfer to Fire Equipment	\$0.00	\$2,691.39	\$0.00	\$0.00
Fire Dept. - Other	\$0.00	\$0.00	\$0.00	\$0.00
	-----	-----	-----	-----
Total Fire Department	\$14,495.00	\$14,495.00	\$15,195.00	\$0.00
Voted Articles				
Fire Dept Truck Fund	\$7,000.00	\$7,000.00	\$7,000.00	\$0.00
Community Hall Capital	\$2,000.00	\$2,000.00	\$2,000.00	\$0.00
Library	\$11,000.00	\$11,000.00	\$12,000.00	\$0.00
	-----	-----	-----	-----
Total Voted Articles	\$20,000.00	\$20,000.00	\$21,000.00	\$0.00
Appropriations				
CV Home Health	\$750.00	\$750.00	\$750.00	\$0.00
CV Agency on Aging	\$0.00	\$0.00	\$600.00	\$0.00
Ret. Senior Vol.	\$0.00	\$0.00	\$100.00	\$0.00
CVCAC	\$300.00	\$300.00	\$300.00	\$0.00
Assoc. for the Blind	\$0.00	\$0.00	\$100.00	\$0.00
Northfield Senior Center	\$100.00	\$100.00	\$0.00	\$0.00

	Budget FY - 2010	Actual FY - 2010	Budget FY - 2011	Budget FY - 2012
Battered Women	\$100.00	\$100.00	\$100.00	\$0.00
Peoples Health & Wellness	\$100.00	\$100.00	\$200.00	\$0.00
VT Ctr Independent Living	\$120.00	\$120.00	\$0.00	\$0.00
Youth Service Bureau	\$0.00	\$0.00	\$250.00	\$0.00
Wash. Cty. Diversion Program	\$0.00	\$0.00	\$0.00	\$0.00
N. VT Resource Conservation	\$75.00	\$75.00	\$0.00	\$0.00
Roxbury Senior Center	\$2,400.00	\$2,400.00	\$0.00	\$0.00
GMTA	\$0.00	\$0.00	\$387.00	\$0.00
Family Center	\$0.00	\$0.00	\$200.00	\$0.00
N. Boys/Girls Club	\$0.00	\$0.00	\$0.00	\$0.00
CVEDC	\$0.00	\$0.00	\$0.00	\$0.00
Good Beginnings	\$0.00	\$0.00	\$50.00	\$0.00
Maple Leaf	\$0.00	\$0.00	\$0.00	\$0.00
CERV	\$0.00	\$0.00	\$0.00	\$0.00
VT Cares	\$0.00	\$0.00	\$0.00	\$0.00
Crime Stoppers	\$0.00	\$0.00	\$0.00	\$0.00
Home Share	\$0.00	\$0.00	\$0.00	\$0.00
ORAC	\$0.00	\$0.00	\$0.00	\$0.00
Sexual Assault Crisis Team	\$100.00	\$100.00	\$100.00	\$0.00
Our House of Central VT	\$0.00	\$0.00	\$0.00	\$0.00
Green-Up Vermont	\$50.00	\$50.00	\$0.00	\$0.00
CV Community Land Trust	\$0.00	\$0.00	\$200.00	\$0.00
Greater Northfield Coalition	\$0.00	\$0.00	\$400.00	\$0.00
School Budget	\$851,183.47	\$851,183.47	\$0.00	\$0.00
Total Appropriations	\$855,278.47	\$855,278.47	\$3,737.00	\$0.00
Total Expenditures	\$1,434,122.47	\$1,389,958.65	\$558,261.00	\$540,932.00

**TOWN OF ROXBURY
BALANCE SHEET AS OF JUNE 30, 2010**

ASSET

Checking	\$170,425.45
TD Banknorth Money Market	\$ 3.77
Merchants Bank Money Market	\$ 74,181.68
Petty Cash	<u>\$ 50.00</u>
Total	\$244,655.90

Due From Other Funds	\$159,422.25
----------------------	--------------

Total Asset	\$ 85,233.65
-------------	--------------

LIABILITY

Current Liabilities

Accounts Payable	\$ 440.37
Payroll-FICA	\$ 1,615.96
Payroll-FWH	\$ 1,014.29
Payroll-MCARE	\$ 378.02
Payroll-RET	\$ 1,501.33
Payroll-SWHVT	\$ 837.92
Office of Child Support	\$ -140.37
Health Ins Withholding	\$ 205.01
Life & AD&D Withholdings	\$ -8.90
COBRA	\$ 0.00
457 Deferred Comp Plan	\$ -15.00
Green Mtn Credit Union	\$ -285.00
Vision Service Plan	\$ -63.36
Union Dues	\$ -8.35
Tax Overpayments	\$ 2,149.82
Employee Prop Tax Wthhldg	\$ 1,032.90
Dog Fee Due to ST of VT	\$ 44.00
Marriage Fee to ST of VT	\$ 70.00
Tax Sale Proceeds	\$.00
Tax Sale Proceeds Interest	<u>\$.00</u>

Total Current Liabilities	\$ 8,768.64
---------------------------	-------------

Long Term Liabilities

Current Expense Loan	\$ 0.00
Library Payroll	<u>\$ 3.58</u>
Total Long Term Liabilities	\$ 3.58

Total Liabilities	\$ 8,772.22
-------------------	-------------

FUND BALANCE

Retained Earnings	\$ 15,312.94
Total Prior Years Fund Balance	\$ 15,312.94
Fund Balance Current Year	\$ 61,148.49
Total Fund Balance	\$ 76,461.43

Total Liability, Fund Balance	\$ 85,233.65
-------------------------------	--------------

**TOWN OF ROXBURY
RESERVE FUNDS**

	HIGHWAY EQUIPMENT	COMMUNITY HALL	RAINY DAY	GRANTS FUND	REAPPRAISAL	BOOK RESTORATION	FIRE EQUIPMENT
<i>Balance June 30, 2009</i>	\$ 20,853.35	\$ 3,571.79	\$ -	\$ -	\$ 21,908.38	\$ 2,364.49	\$ 42,608.56
REVENUE							
Interest	\$ 31.57	\$ 4.98	\$ -	\$ -	\$ 15.78	\$ 3.74	\$ 63.75
CD Interest	\$ -	\$ -	\$ -	\$ -	\$ -	\$ -	\$ -
Town Appropriation	\$ 15,000.00	\$ 2,000.00	\$ -	\$ -	\$ -	\$ -	\$ 2,691.39
Grants	\$ -	\$ -		\$ 3,008.15	\$ -	\$ -	\$ -
Sale of Equipment	\$ -	\$ -	\$ -	\$ -	\$ -	\$ -	\$ -
Other Income	\$ -	\$ -	\$ -	\$ -	\$ 50,700.00	\$ 651.00	\$ -
Total Revenue	\$ 15,031.57	\$ 2,004.98	\$ -	\$ 3,008.15	\$ 50,715.78	\$ 654.74	\$ 2,755.14
EXPENDITURES							
Equipment	\$ -	\$ -	\$ -	\$ -	\$ -	\$ -	\$ 8,935.25
Other Expenses	\$ -	\$ 376.16	\$ -	\$ 2,802.64	\$ 48,834.01	\$ -	\$ -
Transfer Funds	\$ -	\$ -	\$ -	\$ -	\$ -	\$ -	\$ -
Total Expenditures	\$ -	\$ 376.16	\$ -	\$ 2,802.64	\$ 48,834.01	\$ -	\$ 8,935.25
<i>Balance June 30, 2010</i>	\$ 35,884.92	\$ 5,200.61	\$ -	\$ 205.51	\$ 23,790.15	\$ 3,019.23	\$ 36,428.45

**TOWN OF ROXBURY
RESERVE FUNDS**

	ANIMAL CONTROL FUND	MAP CABINET	FIRE BUILDING	PLANNING GRANT	CEMETERY TRUST	LIBRARY CAP IMPROVEMENT	LIBRARY OPERATING RESERVE	SENIOR CENTER
<i>Balance June 30, 2009</i>	\$ 147.06	\$ 619.46	\$ 3,438.56	\$ 1,890.80	\$ 5,421.06	\$ 2,856.40	\$ 16.41	\$ 2,308.98
REVENUE								
Interest	\$ 0.22	\$ 0.96	\$ 5.20	\$ 2.86	\$ 34.26	\$ 2.31	\$ 2.22	\$ 3.50
CD Interest	\$ -	\$ -	\$ -	\$ -	\$ -	\$ -	\$ -	\$ -
Town Appropriation	\$ -	\$ -	\$ -	\$ -	\$ -	\$ -	\$ 11,000.00	\$ -
Grants	\$ -	\$ -	\$ -	\$ -	\$ -	\$ -	\$ 2,465.64	\$ -
Sale of Equipment	\$ -	\$ -	\$ -	\$ -	\$ -	\$ -	\$ -	\$ -
Other Income	\$ -	\$ 123.00	\$ -	\$ -	\$ -	\$ 200.00	\$ 6,441.41	\$ -
Total Revenue	\$ 0.22	\$ 123.96	\$ 5.20	\$ 2.86	\$ 34.26	\$ 202.31	\$ 19,909.27	\$ 3.50
EXPENDITURES								
Equipment	\$ -	\$ -	\$ -	\$ -	\$ -	\$ -	\$ 1,495.60	\$ -
Other Expenses	\$ -	\$ -	\$ -	\$ -	\$ -	\$ 2,483.28	\$ 14,571.91	\$ -
Transfer Funds	\$ -	\$ -	\$ -	\$ -	\$ -	\$ -	\$ -	\$ -
Total Expenditures	\$ -	\$ -	\$ -	\$ -	\$ -	\$ 2,483.28	\$ 16,067.51	\$ -
<i>Balance June 30, 2010</i>	\$ 147.28	\$ 743.42	\$ 3,443.76	\$ 1,893.66	\$ 5,455.32	\$ 575.43	\$ 3,858.17	\$ 2,312.48

**TOWN OF ROXBURY
RESERVE FUNDS**

	SENIOR CENTER SAVINGS	COMMUNITY HALL RESTORATION FUND	LISTERS EDUCATION FUND	FIRE DEPT TRUCK FUND	CEMETERY RESERVE FUND	ACCOUNTING RESERVE FUND	COMPUTERIZA TION FUND	TOWN OFFICE BLDG FUND
<i>Balance June 30, 2009</i>	\$ 3,069.41	\$ 1,220.02	\$ 789.64	\$ 21,399.08	\$ 399.63	\$ 2,044.71	\$ 1,683.60	\$ 2,005.57
REVENUE								
Interest	\$ 4.64	\$ 1.84	\$ 1.04	\$ 32.37	\$ 0.60	\$ 3.10	\$ 2.71	\$ 3.03
CD Interest	\$ -	\$ -	\$ -	\$ -	\$ -	\$ -	\$ -	\$ -
Town Appropriation	\$ -	\$ -	\$ -	\$ 7,000.00	\$ -	\$ 989.00	\$ -	\$ 1,500.00
Grants	\$ -	\$ -	\$ -	\$ -	\$ -	\$ -	\$ -	\$ -
Sale of Equipment	\$ -	\$ -	\$ -	\$ -	\$ -	\$ -	\$ -	\$ -
Other Income	\$ -	\$ -	\$ 389.04	\$ -	\$ -	\$ -	\$ 651.00	\$ -
Total Income	\$ 4.64	\$ 1.84	\$ 390.08	\$ 7,032.37	\$ 0.60	\$ 992.10	\$ 653.71	\$ 1,503.03
EXPENDITURES								
Equipment	\$ -	\$ -	\$ -	\$ -	\$ -	\$ -	\$ -	\$ -
Other Expenses	\$ -	\$ 1,120.85	\$ 150.00	\$ -	\$ -	\$ -	\$ -	\$ -
Transfer Funds	\$ -	\$ -	\$ -	\$ -	\$ -	\$ -	\$ -	\$ -
Total Expenditures	\$ -	\$ 1,120.85	\$ 150.00	\$ -	\$ -	\$ -	\$ -	\$ -
<i>Balance June 30, 2010</i>	\$ 3,074.05	\$ 101.01	\$ 1,029.72	\$ 28,431.45	\$ 400.23	\$ 3,036.81	\$ 2,337.31	\$ 3,508.60

RESERVED ACCOUNTS AS OF JUNE 30, 2010

Highway Equipment Fund	\$ 35,884.92
Community Hall Fund	\$ 5,200.61
Rainy Day Fund	\$.00
Grants Fund	\$ 205.51
Book Restoration Fund	\$ 3,019.23
Reappraisal Fund	\$ 23,790.15
Fire Equipment Fund	\$ 36,428.45
Animal control Fund	\$ 147.28
Map Cabinet Fund	\$ 743.42
Fire Building Fund	\$ 3,443.76
Planning Grant Fund	\$ 1,893.66
Cemetery Fund	\$ 5,455.32
Library Cap Improv Fund	\$ 575.43
Library Reserve Fund	\$ 3,858.17
Senior Center Fund	\$ 2,312.48
Senior Center Savings Funds	\$ 3,074.05
Community Hall Rest Project Fund	\$ 101.01
Listers Education Reserve Fund	\$ 1,029.72
Fire Dept Truck Capital Fund	\$ 28,431.45
Cemetery Reserve Fund	\$ 400.23
Accounting Reserve Fund	\$ 3,036.81
Computerization Fund	\$ 2,337.31
Town Office Building Fund	\$ 3,508.60

Total Reserved Funds **\$164,877.57**

Long-Term Debt:

1. Chittenden Bank (Backhoe Loan)
Due 9/28/11 \$17,250.00 (4.25% int)
\$17,250.00 per year
2. Chittenden Bank (Library Loan)
Due 7/01/11 \$9,000.00 (2.50% int)
\$3,000.00 per year
3. Chittenden Bank (Reappraisal Loan)
Due 10/26/11 \$36,000.00 (3.50% int)
\$9,000.00 per year
4. Northfield Savings Bank (Town Office Project)
Due 5/19/11 \$11,200.00 (\$5.00% int)
\$2,800.00 per year

2010-2011 TAX RATE

GENERAL GOVERNMENT EXPENSE

Library	\$ 12,000.00
Vol Fire Dept	\$ 15,195.00
Fire Dept Truck Cap	\$ 7,000.00
Community Hall Cap	\$ 2,000.00
Appropriations	\$ 3,737.00
Admin	<u>\$151,968.00</u>
Total General Govt.	\$191,900.00

INCOME

Del. Tax Int	\$ 4,000.00
Tax Penalty	\$ 7,500.00
Railroad Tax	\$ 1,100.00
Forest & Parks	\$ 10,000.00
Current Use – State	\$ 23,000.00
Town Clerk Fees	\$ 7,000.00
Interest	\$ 1,200.00
Miscellaneous	<u>\$ 100.00</u>
Total Gen Govt. Income	\$ 53,900.00

GENERAL GOVERNMENT AMOUNT TO BE RAISED BY TAXES:

Total Expenses	\$191,900.00
Total Income	<u>\$ 53,900.00</u>
Amount to be raised	\$138,000.00
Divide by Grand List	<u>+720,789.00</u>
GENERAL GOVT TAX RATE	.1915

HIGHWAY DEPARTMENT EXPENSES INCOME

State & Misc	\$ 52,250.00
--------------	--------------

HIGHWAY DEPT AMOUNT TO BE RAISED BY TAXES

Total Expenses	\$366,361.00
Total Income	<u>\$ 52,250.00</u>
Amount to be raised	\$314,111.00
Divide by Grand List	<u>+720,789.00</u>
HIGHWAY TAX RATE	.4358

TOTAL MUNICIPAL TAX RATE

General Govt	.1915
Highway	<u>.4358</u>
Total	.6273

SCHOOL DISTRICT HOMESTEAD RATE TOTAL HOMESTEAD TAX RATE

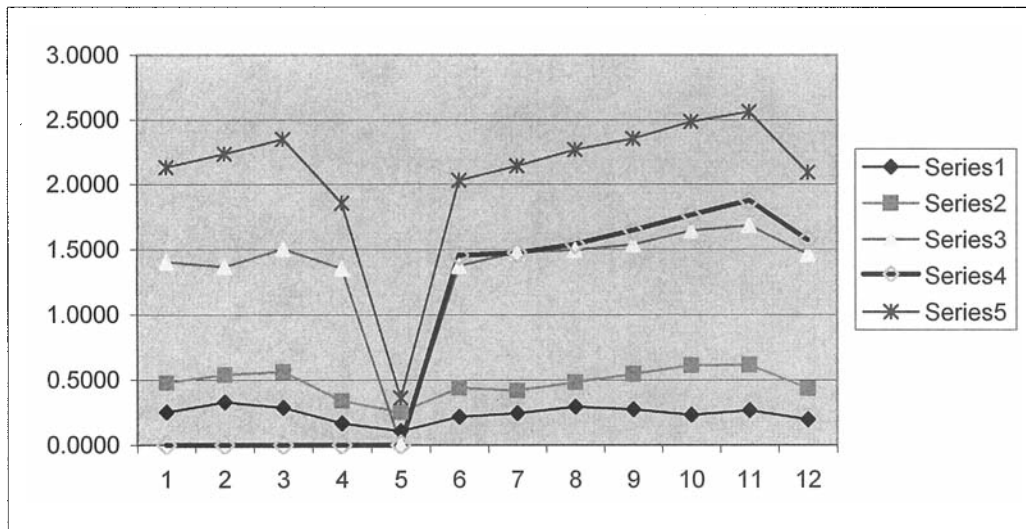
<u>1.4626</u>
2.0899

SCHOOL DISTRICT NON-RESIDENTIAL TAX RATE TOTAL NON-RESIDENTIAL TAX RATE

<u>1.5696</u>
2.1969

PREVIOUS TAX RATES

Year	Year	Adm.	Hwy.	School-Hmstd	School-Nonres	Total
1	2000	0.2520	0.4765	1.4019	0.0000	2.1304
2	2001	0.3281	0.5402	1.3652	0.0000	2.2335
3	2002	0.2859	0.5618	1.5003	0.0000	2.3480
4	2003	0.1659	0.3377	1.3516	0.0000	1.8552
5	2004	0.1077	0.2518	0.0000	0.0000	0.3595
6	2005	0.2170	0.4401	1.3716	1.4542	2.0287
7	2006	0.2448	0.4171	1.4771	1.4726	2.1390
8	2007	0.2934	0.4810	1.4927	1.5381	2.2671
9	2008	0.2742	0.5440	1.5366	1.6443	2.3548
10	2009	0.2316	0.6109	1.6425	1.7617	2.4850
11	2010	0.2665	0.6144	1.6825	1.8734	2.5634
12	2011	0.1958	0.4358	1.4626	1.5696	2.0899



Year 8, 2004 was for a 6 month budget year, Municipal Taxes only

- Series 1 Administrative Tax Rate
- Series 2 Highway Tax Rate
- Series 3 School Homestead Tax Rate
- Series 4 School Non-Residential Tax Rate
- Series 5 Total Tax Rate

COLLECTOR OF CURRENT TAXES REPORT OF 2010

2009-2010 AMOUNT COLLECTED IN TAXES

Grand List as of July 1, 2009:	\$549,548.38
Education Taxes:	
Homestead Tax Rate:	\$1.6825
Non-Residential Tax Rate:	\$1.8734
Highway Tax Rate:	\$0.6144
Administration Tax Rate:	\$0.2665
Total Tax Rates:	
Homestead:	\$2.5634
Non-Residential:	\$2.7543
Total Taxes Billed on July 15, 2009:	\$ 1,462,986.37
Total Current Taxes Collected:	\$ 1,357,174.45
Total Amount Delinquent:	\$ 104,935.48
Adjustment Due to Act 68, Late Filing of Homestead Declarations & Error & Omissions	\$ 876.44

2010-2011 AMOUNT TO BE RAISED BY TAXES

Grand List as of August 19, 2010:	\$720,358.00
Education Taxes:	
Homestead Tax Rate:	\$1.4626
Non-Residential Tax Rate:	\$1.5696
Highway Tax Rate:	\$0.4358
Administration Tax Rate:	\$0.1915
Total Tax Rates:	
Homestead Tax Rate:	\$2.0899
Non-Residential Tax Rate:	\$2.1969
Total Taxes:	\$ 1,543,974.71
Total State Payments	\$ 135,491.47

**TOWN OF ROXBURY
DELINQUENT TAX SUMMARY REPORT
AS OF JUNE 30, 2010**

TAX YEAR	PRINCIPAL	INTEREST	PENALTY	TOTAL
2007-2008	\$ 2,055.45	\$ 289.84	\$ 164.44	\$ 2,509.73
2008-2009	\$ 19,537.74	\$ 2,201.73	\$ 1,563.08	\$ 23,302.55
2009-2010	\$ 56,433.63	\$ 3,064.03	\$ 4,514.74	\$ 64,012.40
TOTAL	\$ 78,026.82	\$ 5,555.60	\$ 6,242.26	\$ 89,824.68

**DELINQUENT TAX REPORT
JULY 1, 2009 – JUNE 30, 2010**

Balance June 30, 2009 \$ 55,973.03

2009-2010 Delinquent Taxes \$104,935.48

Collected Delinquent Taxes:

Year: 2006-2007 \$ 89.09

Year: 2007-2008 \$ 7,178.29

Year: 2008-2009 \$ 27,099.23

Year: 2009-2010 \$ 48,501.29

Total Collected: \$ 96,242.81

Balance June 30, 2009

Year: 2007-2008 \$ 2,055.45

Year: 2008-2009 \$ 19,537.74

Year: 2009-2010 \$ 56,433.63

Total Delinquent Taxes Owed: \$ 78,026.82

TOWN CLERK REPORT

In 2010, our Town Meeting votes passed the first time around. We had two different Special Town Meetings to withdraw from the Central Vermont Solid Waste Management District and join Mad River Resource Alliance.

I was able to receive a VOTE Grant to add a handicap accessible ramp to the back of the Town Office building for voter access to the polling place. The grant would also cover the paving of the Community Hall/Senior Center and a sidewalk to the ramp. But, unfortunately, I was not able to get approval from Preservation Trust of Vermont but will continue to try and get the project approved by them. Fortunately, I was able to get an extension on the grant.

Two hundred twenty-three dogs were licensed in 2010, but there were six that did not get licensed.

The annual rabies clinic will be held on March 12, 2011 at the Town Garage during the hours of 1:00pm – 3:00pm. The Town Office will be open on March 12 from 9am to noon for your convenience. If you are unable to get to the office, you may license dog(s) through the mail. Please send a check and valid rabies certificate to PO Box 53, Roxbury VT 05669. If you are unsure if your dog needs a rabies vaccine, please call me at 728-7840.

In 2010, the Town Clerk's office had some staff changes. In October, the Assistant Town Clerk, Trish Brown, resigned her position. I have enjoyed working with Trish these past 2 ½ years and miss her but I realize her heart is with her horses and not with me. The new assistant is Joyce Brousseau. I feel very lucky that Joyce decided she wanted to work for the Town of Roxbury; she has many years of experience working in offices, with computers and the public. I hope everyone will make her feel welcome.

I had one land records book restored with Book Restoration Funds. I also purchased a new map (mylar) cabinet. I used the fees I received processing DMV renewals and Book Restoration Funds. The new map cabinet will make it easier to access the maps and will protect them. One of the old map books was coming apart and all of them were full. The map cabinet will hold 1,000 maps, Roxbury currently has about 400.

I would like to thank everyone who gave me support and help during 2010's very busy election season.

Tammy Legacy, Town Clerk

School Budget \$1,637,415.00 – March 2, 2010

YES 109

NO 77

The five new Justice of Peace are:

Gerald D'Amico, Gloria Gerdes, Ronald Jerry, Gary Morse and Charles (Chuck) Slocum.

General Election – 54% of the voters cast ballots

Primary Election – 21% of the voters cast ballots

Special Town Meeting (August 10, 2010) – 8% of the voters participated

Special Town Meeting (June 8, 2010) 4% of the voters participated

Town Meeting – 36% of the voters cast ballots

Town Meeting (on the floor) – 15% of the voters participated

**TOWN CLERK REVENUE
FISCAL YEAR ENDING JUNE 30, 2010**

RECORDING	\$ 6,525.00
RESEARCH	\$ 118.00
PHOTOCOPIES	\$ 1,061.79
MOTOR VEHICLE RENEWALS	\$ 141.00
LIQUOR LICENSES	\$ 100.00
LAND POSTING	\$ 30.00
OVERWEIGHT TRUCK PERMITS	\$ 285.00
COMMUNITY HALL RENTAL	\$.00
FAXES	\$ 68.00
MARRIAGE LICENSES	\$ 70.00
DOG LICENSES	\$ 1,280.00
MISCELLANEOUS	\$ 16.00

TOTAL \$ 9,694.79

**DOG LICENSES FOR
CALENDAR YEAR ENDING DECEMBER 31, 2010**

90 Licenses at 4.00	\$ 360.00
74 \$ 6.00	\$ 438.00
29 \$ 8.00	\$ 232.00
31 \$12.00	\$ 372.00
223 Licenses issued Totals	\$ 1,402.00

In addition to the above fees, \$4.00 per dog license (\$892.00) was collected and submitted to the State Treasurer to be used for State rabies control programs and the State Spay/Neuter Program.

- 1. All 2010 dog licenses will expire on April 1, 2011.**
- Fees through April 1: \$8.00 for each neutered male or spayed female; \$12.00 for each dog not neutered or spayed.
- Dogs will be licensed at the regular fee when they become 6 months old during the year.
- After April 1 fees are as follows: \$10.00 for each neutered male or spayed female; \$16.00 for each dog not neutered or spayed.
- A current rabies certificate from a licensed veterinarian must be presented when purchasing a license. Rabies shots are now effective for three years.
- If you have any questions about dog licensing procedures, please call the Town Clerk's Office at 485-7840.
- A person who fails to license a dog or wolf-hybrid in the required manner shall be fined up to \$500 (V.S.A. 20, Section 3550)
- 8. Rabies Clinic – March , 2011-** The Town Clerk's Office will be open Saturday morning of March 13, 2009 from 9:00AM until noon for the convenience of those residents who wish to purchase a dog license or conduct other town business. **The Staff will also be available to issue licenses at the rabies clinic in the Town Garage from 1:00PM – 3:00PM.**

Low-cost Spay/Neuter Resources

VSNIP

The Vermont Spay-Neuter Assistance Programs offers qualifying individuals \$25 spaying and neutering for their pets at area vets. Contact Coordinator, Sue Skaskiw, at (802)672-5302. For an application, send a self-addressed stamped envelope (60 cents) to VSNIP, PO Box 100, Bridgewater, VT 05034 or pick one up at the shelter.

VT-CAN!

Vermont Companion Animal Neutering (VT-CAN!) operates a low-cost spay/neuter clinic in Middlesex. For information or to make an appointment, call 223-0034 or email pamela@vt-can.org.

**2010 VITAL STATISTICS
RECORDED IN THE TOWN OF ROXBURY**

BIRTHS

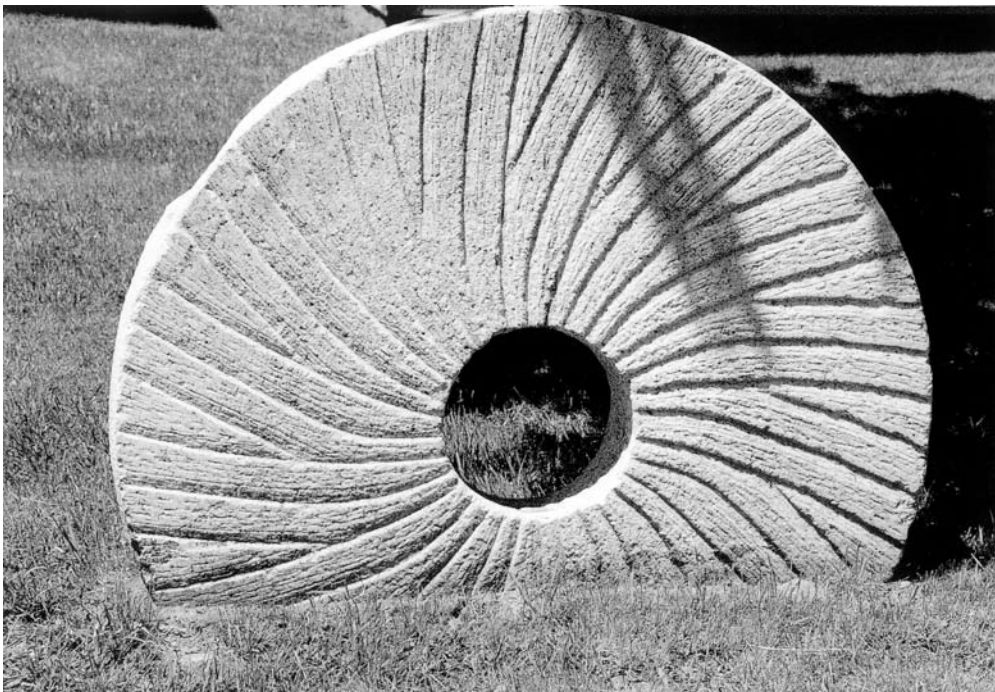
Dorian Bushway to Adrienne Sargent and Shane Bushway
Paige Cruickshank to Kimberly Corliss and David Cruickshank
Ryan Flynn to Margaret Keys and Corey Flynn
Matthew Flood Jr. to Tonya Daigle and Matthew Flood Sr.
Bella Potter to Christiana Little and Justin Potter
Caden Guiffre to Catherine Prowse and Jonathan Guiffre
Anneliese Raspe to Hollie Russell and Josef Raspe
Natalie Raspe to Hollie Russell and Josef Raspe

CIVIL MARRIAGES

Alicia Higgins to Sergio Pedrini
Jeremy Archer-Waterman to Michelle Spence
Christiana Little to Justin Potter
Jeremy Senecal to Iantha Stambaugh
Curtis Short to Candance Walters
Stephen Bell to Christina Burnell
John Sue to Lori Shatney

DEATHS

William Vincent
Marjorie Kittredge
John Starr
Sandra Baker



Grindstone from a gristmill that once operated in East Roxbury, now in front of the town offices.

FREE CAT SPAY/NEUTER!

For Eligible Orange and Washington County Cat owners*

(Reduced cost, \$50, for ALL cat owners in need- rabies is \$5, distemper \$10, vaccinations available at the time of surgery only)

**Call VT-CAN! Spay/Neuter Clinic for Appointment
802-223-0034**

www.vt-can.org

*** Cats Only. Offer good only while funds last. Clients are encouraged to pay what they can to help funds last longer.**

ANNUAL RABIES CLINIC

The annual rabies clinic will be on Saturday, March 12, 2011 at the Roxbury Town Garage (off Warren Mountain Road) from 1:00 PM to 3:00PM.

Rabies Vaccines are \$10.00 per animal and Distemper Vaccines are \$14.00 per animal. Cats **MUST** be in boxes or crates. Dogs **MUST** be on leashes.

The attending Veterinarian is Roy Hadden, Valley Animal Hospital.

The Town Office will be open on March 12th from 9:00AM to Noon for licensing dogs. Licensing will also be available during the rabies clinic.



Inventory of Town Property

Historical Society -----	\$31,111
Community Hall -----	\$105,000
Fire Station -----	\$260,000
Town Garage and Land -----	\$129,226
Town Library -----	\$110,000
Town Office -----	\$520,000
Tractor Building -----	\$200
1989 Mack Truck -----	\$9,000
1993 International Truck (4 WD) -----	\$7,000
2002 International Truck – 7400 Dump -----	\$24,000
2005 Chevy Silverado Truck -----	\$12,000
1987 John Deere Loader -544C -----	\$20,000
1997 John Deere Grader – 672CH -----	\$72,000
2008 John Deere Backhoe -410J -----	\$63,000
Winter Equipment -----	\$15,000
Small Tools -----	\$4,000
Chain Saws and Equipment -----	\$1,000
Office Furniture and Machines -----	\$2,000
Computers and Equipment -----	\$5,000
Miscellaneous Supplies -----	\$1,500
Library Books -----	\$50,000
1975 Chevy Tanker -----	\$4,000
1989 Chevy First Response Truck -----	\$8,000
2003 International Fire Engine -----	\$170,000
1983 Pumper -----	\$10,000
Firefighting Equipment -----	\$50,000
 Total -----	 \$1,683,037



Town Highway Crew (Roger Thomas and Loren Bent, foreman) do well at VMHA Plow contest.

TOWN LISTERS' REPORT

2010 was an extremely busy year due to the state mandated reappraisal of all taxable properties. We wish to thank property owners for the courtesy that was shown, allowing Vermont Appraisal Company to complete the task of assessing 594 parcels. Many people made use of the three days of information sessions we ran at the completion of the reappraisal. These were very successful opportunities for us to explain the process and hear home owners' concerns. There were 65 grievance hearings. Of those, 15 continued on to the Board of Civil Authority. All but two of the 15 were resolved at the BCA level.

Four new homes were built almost to completion. There were 16 property transfers (approximately half counted as valid sales by the VT Tax Dept). Eighty-seven properties were in current use.

ALL RESIDENTS: WHEN YOU FILE YOUR 2010 STATE INCOME TAX RETURN, PLEASE NOTE THAT IF YOU HAVE NOT FILED A DECLARATION OF HOMESTEAD FORM IN PREVIOUS YEARS, YOU SHOULD DO SO NO LATER THAN APRIL 18, 2011. Please note that the new 2010 Declaration of Homestead Form is called an HS-131 not an HS-122.

Following are the 2010 Grand List and Recorded Property Transfers.

Sally Archer, Chair
Harold French
Michael George

2010 GRAND LIST
FORM 411 (TOWN CODE: 531)
(Taxable value includes only those values used when issuing tax bills)

REAL ESTATE	Count	Municipal LV (taxable)	Homestead Ed LV (taxable)	Non-Resi Ed LV (taxable)	Total Ed LV (taxable)
Residential I	98	13,446,400	9,421,200	4,025,200	13,446,400
Residential II	166	37,562,900	24,314,000	13,248,900	37,562,900
Mobile Homes-U	8	144,100	108,800	35,300	144,100
Mobile Homes-L	49	3,989,300	2,853,100	1,136,200	3,989,300
Vacation I	21	1,290,800	0	1,290,800	1,290,800
Vacation II	58	6,641,900	0	6,641,900	6,641,900
Commercial	6	2,347,400	108,100	2,239,300	2,347,400
Commercial Apts	1	124,000	0	124,000	124,000
Industrial	0	0	0	0	0
Utilities-E	2	1,380,000	0	1,380,000	1,380,000
Utilities-O	0	0	0	0	0
Farm	0	0	0	0	0
Other	0	0	0	0	0
Woodland	8	1,833,200	0	1,833,200	1,833,200
Miscellaneous	177	7,588,400	46,800	7,541,600	7,588,400
TOTAL LISTED REAL	594	76,348,400	36,852,000	39,496,400	76,348,400
Cable	0	0	0	0	0
Equipment	0	0	0	0	0
Inventory	0	0	0	0	0
TOTAL		76,348,400	36,852,000	39,496,400	76,348,400
TAXABLE PROPERTY		76,348,400	36,852,000	39,496,400	76,348,400
TOTAL MUNIC GRAND LIST		720,358.00			
TOTAL EDUC GRAND LIST			360,238.00	360,720.00	720,958.00
SPEC EXEMPTIONS	0				
NON-TAX	9	(NON-TAX PARCELS ARE NOT INCLUDED ON THE 411)			

The real estate parcels listed below are exempt from the property tax under Vermont Law.

OWNER NAME	PARCEL ID	PROPERTY DESCRIPTION	LOCATION
Roxbury, Town of	040145-100	2.07 AC, Cemetery	W. side of Carrie Howe Rd
Roxbury, Town of	090032-001	.22 AC, Cemetery	Roxbury Rd
Roxbury, Town of	202040-000	2.9 AC, Municipal Garage	Town Garage Rd
Roxbury, Town of	202104-000	Library	1491 Roxbury Rd
Roxbury, Town of	202107-000	2.3 AC, Elementary School	1559 Roxbury Rd
Roxbury, Town of	202110-000	Historical Society Bldg	1601 Roxbury Rd
Roxbury, Town of	202147-000	Grange Hall	Roxbury Rd
Roxbury, Town of	202148-000	Town Clerk's Office	1664 Roxbury Rd
Roxbury, Town of	202150-000	.37 AC, Fire Station	1726 Roxbury Rd

TOTAL # OF EXEMPT PARCELS: 9

Voted Exemptions by Voters:

*Roxbury Land Conservation Assoc	090018-000	3.87 AC, Park	E. side of Roxbury Rd
-------------------------------------	------------	---------------	-----------------------

Summary of Adjustments to Taxable Values:

*Non-Approved (Voted Contract/Exemption)	1,000
Current Use (Use Value Appraisal Program)	4,192,600
Veterans Exemption	120,000

2010 Recorded Property Transfers

GRANTOR	GRANTEE	DATE	LOCATION
Hansen, Susan	Prieur, Dustin	04/15/2009	Tracy Hill Rd
Partlow, Sandra	Cruickshank, David & Corliss, Kimberly	06/30/2009	Northfield Rd
Partlow, Sandra	Partlow, Sandra & Lawrence, Michael	06/30/2009	Northfield Rd
Burnell, Robert	Abare, Lona	09/11/2009	Drown Rd
Campbell, Dorothy	Maxham, Troy	09/18/2009	Roxbury Rd
Mass, Muriel	Martin, Diane	10/07/2009	Steele Hill Rd
Molitoris, Joseph	Terry, Michael	10/14/2009	East Roxbury Rd
Moskwa, Richard	Beaudette, Charles	10/22/2009	Carrie Howe Rd
Abare, Lona	Abare, David	10/23/2009	Drown Rd
Johnson, Charles	Winton Loveland	11/09/2009	Shaw Rd
Wadsworth	Millard, John	12/18/2009	Warren Mtn Rd
Colgan, Ernest	Partlow, Lisa	01/20/2010	Steele Hill Rd
Adams, William	Donahue, Nathan	02/02/2010	Drown Rd
Lapalme, William	Lapalme, William & Doyle, John	02/02/2010	Horner Rd
McCulloch, David	Selin Williams, Robert	03/09/2010	Bull Run Rd
Eaton Partnership	Dahlstedt, Corey	03/31/2010	Cram Hill Rd

Town Of Roxbury, Vermont
Notes to Financial Statement
June 30, 2010

Summary of Significant Accounting Policies

The accounting policies of the Town of Roxbury conform to generally accepted accounting principals as applicable to governments. The following is a summary of the more significant accounts policies used by the Town.

Fund Accounting

The accounts of the Town are organized on the basis of funds and accounts groups, each of which is considered a separate accounting entry. The operations of each fund are accounted for with a separate set of self-balancing accounts that compromise its assets, liabilities, fund equity, revenue, and expenditures as appropriate. Town resources are allocated to and accounted for in individual funds based upon the purposes for which they are to be spent and the means by which spending activities are controlled. Government-type funds involve measurement of results of Town operation. The General Fund and the Equipment Fund are government-type funds. Fiduciary funds are used to account assets held by the Town in a trustee capacity and are custodial in nature. Revenue Sharing and Cemetery Care funds are fiduciary funds.

Fixed Assets and Long-Term Liabilities

The accounting and reporting treatment applied to the fixed assets and long-term liabilities associated with a fund are determined by the fund's measurement focus. Government funds are accounted for using only current assets and liabilities. The reported fund balance, (net current assets) is considered a measure of "available spendable resources." The General Long-Term Debt Account Group is considered only with the measurement of financial position. It is not involved with measurement of results of operation. It is not a Fund since they do not recognize as Government Fund Type, expenditures of fund liabilities. They are, instead, reported as liabilities in the General Long-Term Account Group.

Basis of Accounting

All Government Funds Types are accounted for using the modified accrual basis of accounting. Revenue is recognized when it becomes measurable and available as net current assets. Expenditures are generally recognized under the modified accrual basis of accounting when the related fund liability is incurred. Exceptions to this rule include: (1) accumulated, unpaid vacation or sick leave, and (2) principal and interest on long-term debt, which is recognized when due.

AUDITORS' STATEMENT

In accordance with Section 1681 of Title 24, V.S.A., we have examined the accounts and records of the Town of Roxbury. To the best of our knowledge, the financial statements and reports show the financial activity and financial position of the Town of Roxbury for the calendar year ended June 30,2010

FRAN FRENCH
JOAN LEARY
LINDA MANEY



The Vermont Department of Health works to protect, improve and promote the health of Vermonters. The following are some of the many services provided to the citizens of Roxbury 2010.

H1N1 – the Vermont Response:

From spring 2009- spring 2010 the Vermont Department of Health undertook multiple actions to prepare for and respond to the outbreak of the H1N1 influenza virus. The State of Vermont was highly effective in responding to this public health threat, achieving the country's second highest level of vaccinations for populations in the priority immunization categories. This successful effort was the product of collaborations within Vermont state government, the medical and education sectors and the general citizenry.

VDH planned and managed the mass vaccination effort that involved over 600 K-12 schools and public health clinics in coordination with the Vermont Department of Education, Vermont Assembly of Home Health Agencies (which includes the Visiting Nurse Association), Vermont Emergency Response Volunteers, eligible emergency medical technicians, and schools located throughout the state. In the town of Roxbury 37 citizens received the H1N1 vaccine.

Ultimately, the Vermont Department of Health, in conjunction with its many partners, was able to accomplish an enormous amount of work over a very short and intense period of time. As of February 23, 2010 over 165,000 novel H1N1 influenza vaccinations had been administered statewide, with approximately 60 percent of pregnant women, 68 percent of household contacts with children under 6 months, 43 percent of healthcare workers and EMS staff, 53 percent of people aged 6 months to 24 years, and 23 percent of people with higher risk health conditions 25 to 64 years of age (all target groups) receiving the immunization. Furthermore, over 600 school and public vaccination clinics were successfully conducted. This accomplishment alone is a testament to the dedication and ability of Vermont's public health, healthcare, and education workforce.

Special Supplemental Nutrition Program for Women, Infants and Children ('WIC'):

One of the most effective ways to improve the health of the overall population is to improve nutrition and physical activity. In addition to providing healthy foods, WIC provides nutrition counseling, breastfeeding support, health education, and connections to other community resources. Last year, WIC added new foods including whole grain breads, skim or 1% milk for everyone over age 2, soy products and a small cash benefit that can be used to buy fruits and vegetables at participating grocery stores. During 2010, 37 women, infants and children living in Roxbury received foods as well as health screening and individualized nutrition education through this program. The average value of foods provided is \$45.00 per person per month.



ROXBURY CEMETERY ASSOCIATION
Calendar Year 2010

During the past year there were three interments in the cemetery. They were: Carl Pombar, James Henry Royal and Norma Lose.

As noted below our average expenses far exceed our income. Earnings on investments have dropped to a very low level. These earnings are our only income. The Trustees have approached the Selectboard regarding financial help to pay for the mowing.

Board of Trustees

Reginald Brown Sr., Sexton
Gloria B. Gerdes, Sec./Treas.
Mark Gerdes, President
William Ray

Financial Funds

Trust fund:

		Revenue
Certificate of Deposit, Northfield Savings Bank	\$29,562.28	
Interest paid to savings account		\$440.74

Other funds:

Dreyfus U.S.Treasury, Intermediate Term Fund	\$27,676.68	
Market Value-Shares owned 2,057.746		
9/30/10 withdrawal of funds		1,800.00
Dividends paid to savings account		745.60
Total		2,986.34
Northfield Savings Bank		
Checking account, balance 12/24/10	314.93	
Savings account, balance 12/28/10	398.65	

Expenses

Gas, oil and supplies		363.19
Liability insurance		250.00
Mowing		1,800.00
Total		\$2,413.19



"Ginger" Gerdes, Unofficial town office greeter 1997-2007
In Memory 1996-2010

ROXBURY COMMUNITY HALL RESTORATION FUND

In 2010 Michael George continued work on the construction of the new kitchen and bathroom in the rear of the Community hall building with other volunteers, William Ray, Terry Edwards, Rick Daniels and Jay Chamberlain. Together they finished the demolition and built interior walls and installed doors and stairs so that Rick could rough in the electrical wiring and Sunrise Solar Services could rough in the plumbing for the handicap accessible restroom. Sheetrock work was done by Mike and Jay.

Currently the organization has \$9,192.91 in funds available for additional remodeling. A total of \$1,291.19 was raised in 2010 from donations and the 4th of July fundraisers. A total of \$1,578.93 was spent on lumber and electrical and plumbing materials.



This is John Duncan, from East Roxbury, riding in the 2010 Fourth of July Parade.

Roxbury Volunteer Fire Department 2010-2011 Annual Report

During the 2010 calendar year, we responded to 27 calls. These included both fire and mutual aid calls for accidents and medical emergencies. Currently, we have 8 active members; new members are always welcome.

Training drills on the use of equipment were held monthly. One or more representatives of the department attended the bi-monthly meetings of the Capital Fire Mutual Aid System.

Our 1984 GMC tanker with a capacity of 1600 gallons and a front mounted pump continues to function well. However, this truck will need to be replaced within the next several years as it has a steel tank that will eventually fail due to corrosion.

The Federal Communication Commission has mandated that all emergency communications equipment switch from wide band frequencies to narrow band frequencies by January 2013. We now have upgraded all of our radios and pagers to meet this mandate through grants.

There are 27 towns within the Capital Fire Mutual Aid system, of which Roxbury is a member. Fifteen of these towns are dispatched through the Montpelier Police Department. This communication function is accomplished via three communication towers which are distributed in the central Vermont area. The three communication tower transmitters are not currently compatible with the narrow banding mandate from the FCC. Capital Fire Mutual Aid has requested budgetary estimates from communication suppliers for upgrading the transmitters. The estimates range from \$170,000 to \$640,000.; the smallest figure providing the least amount of functionality and the larger amount providing state of the art functionality. Capital Fire Mutual Aid has submitted a grant to FEMA for the \$640,000. to support the new transmitters as one potential funding source. Another possibility which is being explored is VCOMM grants. The reason we mention this situation is that if no grants are obtained, it may have a financial effect on the town of Roxbury as both fire and ambulance dispatching is accomplished through this communication system.

Currently, elected officers of the Roxbury Volunteer Fire Department are Tim Martin, Chief; Kevin Pecor, Assistant Chief; Walter French, Treasurer; and Don Randall, Secretary.

Fund raising by the Roxbury Firefighters Association during the past year was very successful. The Dime Toss at the Northfield Labor Day Observances and Hunter's Supper with a raffle of sporting items were held. The RFA conducted the Pig Roast and raffle during the foliage season. This has continued to be a very popular event. We would like to thank all who supported these fund raising events during the past year. Community support is critical to sustaining our Volunteer Fire Department. Some RVFD members worked on the Roxbury Green Up Day and assisted the Roxbury Senior Center Volunteers at the Fourth of July Chicken BBQ. We thank the Senior Center for taking over this Roxbury tradition and for doing such a great job with this event.

Roxbury Volunteer Fire Department

7/01/09--6/30/10 7/01/09--6/30/10 7/01/10--6/30/11 7/01/11--6/30/12

	Budget	Expenditure	Current	Proposed
Town Appropriation	\$ 14,495.00	\$ 14,495.50	\$ 15,195.00	\$ 14,895.00

Budget Detail

Truck interest	\$ -	\$ -	\$ -	\$ -
Community Service	\$ 50.00	\$ -	\$ 50.00	\$ 50.00
Electricity	\$ 1,200.00	\$ 879.25	\$ 1,200.00	\$ 1,100.00
Equipment	\$ 5,000.00	\$ 3,836.05	\$ 4,000.00	\$ 4,000.00
Phone *	\$ 400.00	\$ 411.88	\$ 400.00	\$ 400.00
Heat	\$ 2,800.00	\$ 1,390.00	\$ 2,000.00	\$ 1,800.00
Insurance	\$ 3,500.00	\$ 4,315.50	\$ 5,700.00	\$ 6,000.00
Mutual Aid	\$ 200.00	\$ 200.00	\$ 200.00	\$ 100.00
Parts & Services	\$ 300.00	\$ 589.17	\$ 500.00	\$ 500.00
Supplies/Miscellaneous	\$ 100.00	\$ 69.88	\$ 100.00	\$ 100.00
Training	\$ 400.00	\$ -	\$ 400.00	\$ 300.00
Truck Fuel	\$ 400.00	\$ 111.88	\$ 500.00	\$ 400.00
VSFA	\$ 145.00	\$ -	\$ 145.00	\$ 145.00
Transfer to Equipment Acct		\$ 2,691.89		

\$ 14,495.00	\$ 14,495.50	\$ 15,195.00	\$ 14,895.00
--------------	--------------	--------------	--------------

	7/1/2008		6/30/2009	
Bank Accounts	Beginning Bal	Income	Expense	Ending Bal.
Certificate of Deposit	\$ 38,792.28	\$ 395.07	\$ -	\$ 39,187.35
Checking	\$ 1,390.42	\$ -	\$ -	\$ 1,390.42

* note: Capital west dispatch will come from the general fund budget in FY2010

Roxbury Food Shelf

A recent study by the U.S. Dept. of Agriculture states that 1 in 7 Vermont households are hungry. Perhaps even more shocking to us was to learn the statistic (cited from the same report) that Vermont and Alabama are tied as having the highest increase in household food insecurity in the country over the last 10 years.

That may well be true, but here at the Roxbury Food Shelf we have another standard for measuring increased need, one much closer to home. Since late last spring, we've discovered that we can no longer expect only one trip a month to the Vermont Foodbank in South Barre to suffice us. And so, since then, we've more than doubled the number of our pick-ups (from once monthly to alternate weeks). From October, 2009 through September of this year, we've had 404 household visits representing 1,230 people. (Many of these people come week after week, while others come much more sporadically.)

Due to the increased availability of donated products from the Vermont Foodbank, our expenditures this past year have actually decreased (our Foodbank bills totaled \$381.00) while we've been able to provide weekly assistance to many more people.

This is the 14th year that the Food Shelf has been able to operate successfully under the auspices of the Roxbury Church. It's fairly impossible to gauge whether success can accurately be measured by the number of people we serve, or by a decline in that number. But undeniably successful is the number of dedicated people who cheerfully donate their time and/or treasure. This is the first year that we've received fresh, organic produce from farms in Warren and Montpelier, and we have Ed Dickinson and Brenda Cruickshank to thank for their weekly deliveries. Jennifer Bennett of Warren (C.C.O. - Chief Canine Officer - of PAWSITIVE Pantry) has made a hugely pawsitive - er, positive - difference in the lives of many of our canine and feline clients. And, writing this in mid-December, we've noticed the donation boxes positioned in strategic places throughout town. We believe that is, once again, the work of children from the Roxbury Village School - truly, wonderfully compassionate citizens-in-the-making!

To the folks who bring food donations to our church services, week after week..... and to those who leave the hot dogs in the church refrigerator or the canned tuna in the bag on our doorknob (you know who you are!), THANK YOU!!

Blessings and thanks to all of our supporters!

Green-up Day

In 2010, the town supplied most of the funds for the food needed for our Town Picnic, so the donations that I typically receive for green-up activities went for fun this time, not food (not that food isn't fun, mind you).

The fact that I didn't have to purchase food helps explain why you see twenty-five 3rd-through-6th graders smiling (presumably) behind their cow masks, and sporting Green-Up tee shirts. With the \$225.00 donated by a few generous benefactors, I was able to outfit most of the Village School and a number of our most dedicated volunteers with shirts commemorating the 40th anniversary this past year of Green-Up Vermont.

So Green-Up has officially entered middle age, but shows no sign of slowing down. With the help of approximately 80 folks of all ages, 2,020 lbs. of roadside rubbish was collected and delivered to the Town Garage, along with 235 tires. Let that be a lesson to all of us: a little exercise can do wonders in shedding a village's unwanted pounds!

What makes Green-Up really special in Roxbury is the widespread participation among our residents and organizations: the Fire Department, the Library, the Senior Center, the School, Roxbury Roots..... everybody gets into the act! Green-Up truly transcends the red and blue political divide, focusing solely on beautifying our town while fostering neighborly good will.

Green-Up Day 2011 is Saturday, May 7th. You may presently be looking out upon a somewhat snowy landscape, but - trust me - it's just around the corner.



Anonymous helpers from the Roxbury School on Green-Up Day in 2010.

Roxbury Historical Society

In 2010, the Roxbury Historical Society focused on three areas: organizing the historical documents that have been packed away in boxes for years, the cataloging project of the town cemeteries, and the now biannual Vermont History Expo.

Most of the boxes of documents, long forgotten, were from the office of Roxbury's most famous citizen and Jack-of-all trades, Zed Stanton. Mr. Stanton, who served in positions as varied as Town Clerk, School Board President, town attorney, and Lieutenant Governor of Vermont during his lifetime, had a law office in the current historical society building. The most exciting documents found to date were the original Grand Lists from 1804, 1811 and several from the 1820s and 1830s. These important documents, which list names of town citizens and the possessions they were taxed on, were turned over to the Select Board for safe keeping in the vault.

The goal of the cemetery project is to photograph each tombstone and transcribe the information so it can be kept in a catalogue. Another goal is to eventually put both the information and photographs on a website for people doing genealogical research. Some of the old graves are in good shape, but others, like the majority of the Tracy Hill cemetery (Orcutt/Woodward/East Hill Cemetery) stones, have been damaged and even moved from their original locations. The project continued to progress in 2010 with the completion of the West Hill First Settler's Cemetery.

Roxbury was again represented at the Vermont History Expo with an exhibit entitled "Back to the Land Again", which highlighted several local citizens who are working the land, as well as providing a history of Roxbury's land use. The next Vermont History Expo will be in 2012 and the focus will be the Civil War, and the Roxbury Historical Society is planning an exhibit.

The Society is looking for old photographs and/or documents that people wish to donate or that we copy and then return to owner. Please call Sue Nevins at 485-5619 for this or if you're interested in helping out either with current or future historical projects or with maintenance and repair of the historical society building.

ROXBURY FREE LIBRARY
Annual Report for Town Meeting
March 2011

Once again this past year, the library has seen increased usage, with more patron visits, greater circulation of books, videos and other materials, heavier use of public access computers and WiFi. There has been modest, but steady, growth. We registered 31 new patrons during the fiscal year, and have updated the entire patron list since then, in anticipation of automating the library catalog in the near future.

Regular programming included a Halloween open house, three RIF book distributions to the children of Roxbury, four Red Tent Night events for women, weekly story hours, monthly book discussions, and several Crafters' Afternoons during the winter months. We held many special programs, as well, among which were: multiple programs around the Vermont Reads book, *When the Emperor was Divine*, in conjunction with Vermont Humanities Council and Brown Public Library; Button-up Vermont workshop; "The Poetry of Music" with Michael Arnowitt; film showing of "Life in Washington County" by Bill Doyle; and a very special Roxbury Roots Kids' Summer Gardening and Reading Program, in which kids planted, tended, and harvested their own garden, prepared delicious meals every week, and read more than 30 books.

Fundraising efforts included Green-Up Day book sale, dessert sale at the Independence Day barbeque, town meeting raffle baskets, and the annual library letter to patrons and friends. Much appreciation is due to all who donated money, food and basket items, and who bought food, raffle tickets and books!

Much appreciation is also due to our many volunteers, who tend the desk, shelve books, deliver to daycares and the elderly, recommend books to patrons, etc., etc.. The library could not operate so successfully without their tireless efforts.

Finally, the finishing touches on the building's addition were completed, the ramp entrance, in particular. The library is now fully accessible and ready to serve you.

Roxbury Free Library

Budget FY 2012

Expenditures	FY 09 Expenditures	FY 10 Expenditures	Budget FY 11	Budget FY 12
salary	7554.54	7987.84	8736	8736
books/materials	2168.31	2439.66	2300	2500
RIF	132.68	147.44	150	150
supplies	585.13	346.56	350	450
programs	441.21	394.07	500	400
sub pay	192.00	224	450	450
comp.software	0.00	479.96	500	500
heat	1360.81	1102.76	1200	1200
electric	436.87	445.5	530	530
phone/dsl	376.62	355.71	380	380
postage	159.00	94	250	250
gifts	300.00	50	0	0
maintenance	711.44	408.1	150	150
training	217.00	200	200	200
insurance	569.00	744	950	1000
misc	0.00	0	0	0
grant programs	0.00	700	0	0
equipment/furniture	0.00	1015.64	0	0
Total	15204.61	17135.24	16646	16896

Receipts	Actual FY 10	Budget FY 11	Budget FY 12
town	11000	12,000	12,000
grants	2465.64	0	0
dividends	290.16	250	250
donations & fundraising	6151.25	4396	4646
Total	19907.05	16,646	16,896

THE ROXBURY SENIOR CENTER
Fiscal Year 2010

In this past fiscal year the Roxbury Senior Center continued to participate in our annual events. On Green-Up Day we held a bake sale in conjunction with the Library's annual book sale. On Saturday, July 4th members joined the team preparing and serving the annual chicken barbecue. We also ran the Bingo game and sold popcorn. Proceeds were donated to the Community Hall Restoration Project. We hosted approximately 40 costumed "Trick or Treaters" on Halloween. Cider and treats were donated by members.

In February Brianna Howard, an Americorps Vermont volunteer, organized an exercise group at the Senior Center. The Bone Builders Program focuses on building strong bones, improving balance and flexibility. The program is free and participants enjoy the sessions.

We gained three new members this year who join us at our Monday lunches. We welcome new participants.

Gloria Gerdes, President & Treasurer

Receipts:

Town appropriation	\$2,400.00
--------------------	------------

Expenses:

Electricity	587.68
Telephone	502.50
Fuel Oil	777.90
Total	\$2,455.71

Ending balances 6/30/10:

Northfield Savings Bank

Checking account	\$1,611.87
Amount held in town reserve funds	5,386.53
Total	\$6,998.40

**Central Vermont Regional Planning Commission
2010 ANNUAL REPORT
TOWN OF ROXBURY**

The Central Vermont Regional Planning Commission is a consortium of 23 towns and cities in Washington County and western Orange County. The Commission has been providing planning and development assistance to communities for over forty years through its experienced and knowledgeable staff. CVRPC is governed by appointed representatives from each municipality in the region.

The Commission provides assistance on municipal plan and bylaw updates, and this year focused on updates to municipal flood hazard bylaws. The Commission's Transportation Advisory Committee (TAC) continued to evaluate the regional inter-modal transportation needs and make recommendations on projects that should be included in the State Transportation Agency's 5 year capital program. CVRPC also continued its work on the development of regional and local pre-disaster mitigation plans, population and housing growth projections, and river and stream assessments to support transportation and water quality improvements. CVRPC also received a grant in 2010 to perform energy audits of municipally owned buildings in the region and is providing assistance to local energy committees.

This year, the Commission supported the efforts of the Town of Roxbury through administration of the Mad River Resource Management Alliance, updating the National Flood Insurance Program maps and regulations, conducting energy audits on the Town Office, Town Highway Garage, Library, and Community Hall, and providing assistance to the Town Energy Committee.

The Commission also sponsors regional planning programs, provides a forum for inter-municipal cooperation, and participates in state regulatory proceedings for projects that have impact across municipal boundaries. Significant staff time this year was spent working with municipalities on mapping and analysis of current bylaws to understand how they influence future development patterns. CVRPC can also provide model bylaws and assist municipalities with the administration of grants.

Thank you for your continued support for local and regional planning. Please call us for assistance with planning, zoning, transportation, recreation, mapping, or data needs. For more information, please call us at (802) 229-0389, or visit our website www.centralvtplanning.org.

Susan M. Sinclair, Executive Director
Tom Frazier, Commissioner

ROXBURY PLANNING COMMISSION

The end of 2010 finds the Roxbury Planning Commission wrapping up both the Pre Disaster Mitigation Plan and Flood Hazard Regulations, with the help of the Central Vermont Regional Planning Commission. These regulations not only help Roxbury take the steps needed to plan for possible natural or manmade disasters but also how to best plan to avoid them. While the mitigation plan helps to lay out what to do during and after a disaster, the hazard regulations help Roxbury to plan ahead and help pinpoint areas for improvement. Part of those plans includes a thorough review of our bridge systems. While Roxbury has already begun road improvements, as many of us may have noticed, Roxbury is also looking to the future. Roxbury recognizes the need for attention to some of its bridge systems, and as a result has implemented a 5-year bridge plan. This has given us the opportunity to involve the community by welcoming the assistance of some of the engineering students at Norwich University. They, along with their professor, are working to help compile a survey of the status of 6 bridges in Roxbury, and will report back to us with their findings as to possible actions and estimates of life span for the bridges. This information will help to guide the Planning Commission, Selectboard, and Road Commissioner, as to how to begin renovations of our existing bridge systems.

As we head into 2011, the Planning Commission will be looking over the current Town Plan. We made a lot of goals for ourselves and, while we have already made many of them a reality, we look forward to another busy year, and welcome the opportunity to follow through on more.

January 6, 2011

The Mad River Resource Management Alliance includes the Towns of Duxbury, Fayston, Moretown, Northfield, Roxbury, Waitsfield, Warren and Waterbury. The Alliance was formed through an Interlocal Agreement that began in 1994. We changed our name in 2008 to reflect the fact that we are managing resources not wastes. Northfield and Roxbury joined the Alliance in 2010.

During 2010, the Alliance held two Household Hazardous Waste Collection Day events at the Harwood Union High School in Duxbury on May 8, 2010 and on October 2, 2010. A total of 330 households participated in the events this year which represents 4.2% of our population. We collected over 1515 gallons and 3,416 feet of fluorescent bulbs at the two events. Residents within the Alliance communities are able to bring all their waste pesticides **and** up to 10 additional gallons of hazardous waste to each event for disposal at no charge. **If you have waste mercury containing products such as: thermometers or thermostats; medical or scientific instruments; switches; lamps; batteries or other mercury containing waste you can dispose of these products at the Household Hazardous Waste Collection Day Events.** The Alliance will swap your mercury fever thermometer for a digital thermometer at no charge at these events. Bring your mercury thermostats to the Household Hazardous Waste Collection and you will receive a coupon that can be redeemed for a \$5.00 rebate by the Thermostat Recycling Corporation which will process the thermostats. Remember that latex paint is not a hazardous waste and will not be accepted. You can mix latex paint with kitty litter to solidify it and dispose of the mixture in your garbage. We are again planning two collection day events in 2011 at Harwood Union High School. They are scheduled for May 14 and October 1, 2011.

Over 1,183 gallons of used crankcase oil was collected within the Alliance at our Used Oil Collection Tanks during 2010. The tanks are located in Waitsfield at the Earthwise Transfer Station and at the Moretown Landfill, Inc.. There is also a tank at the Northfield Transfer Station. As an Alliance resident, you can bring up to 5 gallons of used crankcase oil at a cost of fifteen cents per gallon at the Earthwise Transfer Station, fifty cents per gallon at the Moretown Landfill, Inc. and no charge at the Northfield Transfer Station for proper disposal. A car and truck oil filter crusher is also available for Alliance residents at the Moretown Landfill, Inc. at a cost of seventy five cents per filter.

The Alliance has begun working with The Highfields Institute to provide training and educational programs that will result in composting of food scraps that have been diverted from school waste streams. Additional programs will be brought to Alliance schools through a coordinated effort of the Northeast Resource Recovery Association (NRRRA) and AVR. The Alliance has established a textile recycling program at the Moretown Landfill in conjunction with the Southeastern Vermont Community Action. You can bring all your clean clothing, linens and shoes to this site at no charge. A total of 3.7 Tons were collected in 2010. A total of 0.78 tons of books were recycled with the electronic waste at the Moretown Landfill. Visit our web site at madriverrma.org. You will find information on solid waste issues on this web site.

The fourteenth truckload sale of compost bins was successful with the distribution of 50

compost bins and 20 kitchen collectors. It is estimated that each compost bin can compost 650 pounds of garden and kitchen waste annually. This means rich soil to add to your garden and less waste to go to the landfill. We will hold our Fifteenth Compost Bin Sale this spring. The Alliance held a car and pickup truck tire and metal collection event at the Moretown Landfill, Inc. and at the Earthwise Transfer Station in conjunction with Green Up Day in 2010. A total of ~ 1,040 tires and ~6 tons of metal were collected during this event. In the fall the Alliance participated in the Wheels for Warmth Program held on October 30. We are planning to hold a spring tire and metal collection in conjunction with Green Up Day on May 7. In the fall, the Alliance will again coordinate with the organizers of the Wheels for Warmth Program in Middlesex to encourage participation in this program. Publicity on this event will come out in the fall.

The Moretown Landfill, Inc. provides Alliance residents with the opportunity to bring their recyclables to the facility at no charge if you also bring your trash for disposal at a fee. The no fee recycling is done as part of the arrangement between the Alliance and the Moretown Landfill, Inc. for being the "host district" for the facility. Single stream recycling is a reality in the Alliance. You can bring your mixed paper, glass bottles and jars, metal cans and **plastics #1 through #7**, except for plastic film wrap and bags and beaded styrofoam for recycling. The recyclables are taken to the Chittenden County Materials Recovery Facility for processing. The Casella Earthwise Transfer Station and Moretown Landfill, Inc. also participated in the free disposal of roadside litter during the Green Up Day celebrations. The Alliance continues an electronic waste collection and recycling program and this year approximately 21.02 tons of computer systems, printers, televisions and VCRS were collected. As a result of new Vermont legislation, after July 1, 2011, computers, printers, monitors and televisions can be recycled at no charge. Additional information on this program is found on our web site. The Alliance is a member of the NRRRA which helps us market some recyclable commodities such as tires, propane cylinders and other materials. The Alliance is also a member of the Product Stewardship Institute(PSI). As a stakeholder in the PSI we work with other entities to reduce the environmental and health impacts of a variety of consumer products. This is accomplished by looking at the life cycle impacts of products and their packaging. Things like energy and materials consumption, emissions during manufacturing, toxicity, worker safety and waste disposal are among the issues reviewed. The objective of product stewardship is to rethink the way things are created in order to have more sustainable products in the future. We are also a member of the Vermont Product Stewardship Council which provides a local focus to stewardship issues. A new composting facility, Grow Compost of Vermont has been permitted in the Alliance and offers diversion of food and other organic material from commercial sources to create a valuable resource for your garden.

Backyard burning of trash is illegal and causes air pollution problems. Be a good neighbor and don't burn trash. If you know of any illegal dumping sites within your town that would benefit from an Adopt a Site Program give John Malter, Alliance Administrator a call at 244-7373 and let's see what we can do to help eliminate these types of problems together. The FY 11 assessment for the administrative and program costs remains at \$2.00 per capita. The Central Vermont Regional Planning Commission provides accounting support to the Alliance. We thank them for this assistance.

The representatives of the Alliance include: Duxbury; Diane Lynch; Fayston, Bob Vasseur; Moretown, Jonathan Siegel; Northfield, Fred White; Roxbury, Dave McShane; Waitsfield, Sal Spinosa, Warren, Ken Blair; Waterbury, Ed Steele and John Malter from Waterbury is the Administrator for the Alliance.

1/1/2010 opening balance \$23,808 includes cash, A/R, and value of fixed assets

Mad River Resource Management Alliance
January 1, 2010 through December 31, 2010

Balance Sheet

Assets:

Cash		\$25,580
Accounts Receivable:		
MLI-Education	2,602	
MLI-HHW	570	
MLI-tires	0	
Agency of Ag Pesticide Grant	3,911	
DEC Grants	4,284	
Total Accounts Receivable		11,367

Fixed Assets:

Oil Tanks	\$3,929	
Oil Filter Crusher	2,400	
Banners	195	
Sandwich Boards	114	
	Total fixed assets	\$6,638
	less depreciation@\$106/mon	-6,638

Total Assets **\$36,947**

Liabilities

Accounts payable \$ -

Fund Balance

Operating \$22,889

Capital Reserve \$13,000

Oil Tank Closure Escrow \$1,058

Fixed Asset Value \$0

Total **Balance**
includes cash, A/R, and net fixed assets **\$36,947**

TOWN OF ROXBURY
TOWN MEETING MINUTES OF MARCH 2, 2010

The polls opened at 10:00 a.m.

Lucinda Sullivan, School and Town Moderator, explained the rules of the meeting. She welcomed the new voters.

- Article 1. To elect a School District Moderator. Australian Ballot – no action taken.
- Article 2. To elect a School Director for a term of 3 years (Australian Ballot). No action taken.
- Article 3. To elect a School Treasurer for 1 year (Australian Ballot) No action taken.
- Article 4. To hear and act upon reports of the Town School District. Fran French moved, Randy Whitney seconded. Motion passed.
- Article 5. Shall the voters of the Roxbury Town School District approve the appropriation of \$1,637,415.00 necessary for the support of its school and secondary students for the year beginning July 1, 2010? (Australian Ballot) David Larcombe asked the School Directors if they were aware that the budget could have a 16.8% increase. Deborah Van Ness, School Director, spoke on behalf of the School Directors. She said that she was not sure about the increase, Deb said that the new appraisals should help the tax rate. David Larcombe, a School Business Manager in another district, spoke about the Common Level of Appraisal (CLA).
- Article 6. Shall the voters of Roxbury authorize the Roxbury Town School District to borrow money, in anticipation of revenue, not to exceed anticipated revenue for the 2010-2011 school year? (According to VSA Title 16, Section 562) (Australian Ballot) No action taken.
- Article 7. Shall the voters of the Roxbury Town School District authorize the transfer of any surplus funds from the 2009-2010 budget to the maintenance reserve fund? (Australian Ballot) No action taken.
- Article 8. To transact any other business proper to be brought before said meeting. Karen Hedding moved, Randy Whitney seconded. Craig Sullivan asked about school demographics. Deb Van Ness does not know how many new children will be coming in the fall, the amount of children enrolled has stayed about the same. Deb thanked Michelle Dickinson for her work as a Board Member. The motion passed.

The School portion of meeting adjourned at 10:30a.m. with a motion from Fran French and seconded by Sally Archer.

Maxine Grad spoke to the voters about legislative issues like cell phone use while driving, foreclosures, Vermont Yankee and consolidating supervisory unions.

The Town portion of the meeting opened at 10:50a.m.

- Article 1. To elect all officers by Australian Ballot. No action taken.
- Article 2. To hear and act upon the reports of the Town Officers. Randy Whitney moved, Sally Archer seconded. Dave McShane, Selectman, informed the voters that the Board cut the budget. Sue D'Amico asked where the budget was cut. One highway position was eliminated, and there are two part-time employees. The budget was cut in both the highway and general. Newer equipment for the highway is needed. Bridge work needs to be done. Frank Morgano spoke about bridge work in the future. The five-year plan for Bridges, Roads and Buildings were discussed. Jon Guiffre asked how much money is needed for bridge repair. The Board did not have an answer for that question. Tim Martin asked about the surplus funds from last year. Where in the budget does it mention it? Dave said the funds were carried over in the general fund. Tammy Legacy said the CPA suggested the Town increase the fund balance so nothing was done with the surplus funds. Tim Martin said the funds need to come back to the Taxpayers and Norm Smith said the money for roads are for roads.

Sally Archer, Town Lister, spoke about the status of the Town-Wide Reappraisal. The reappraisal should be completed in June. Everyone will receive notice of the new values.

The motion passed.

- Article 3. To vote that the Treasurer is paid from the General Fund. Karen Hedding moved, Tim Martin seconded. All ayes have it.
- Article 4. Will the voters approve the collection of taxes on real estate in two (2) equal installments payable to the Collector of Current Taxes on the fourth Saturday of August 2010 and the fourth Saturday of February 2011, with interest of one percent (1%) per month, or fraction thereof, on the unpaid taxes after each installment due date? Randy Whitney moved, Tom Frazier seconded. Dave McShane moved to amend the fourth Saturday in August to the fourth Saturday in September. Dave explained that with the reappraisal being completed, extending the due date would give more time for grievances before setting the tax rate. Questions were asked about payment to school and if there would be funds available for town if due date was changed. Dave said the school is paid twenty days after due date and if the town does not have enough funds the Board may have to borrow until the due date.

David Larcombe mentioned that the school may have to pay more in interest if the date is changed. Sally Archer said the Grand List should be filed on time. The amended article was passed. The amended article is now before the voters: Will the voters approve the collection of taxes on real estate in two (2) equal installments payable to the Collector of Current Taxes on the fourth Saturday of September 2010 and the fourth Saturday of February 2011, with interest of one percent (1%) per month, or fraction thereof, on the unpaid taxes after each installment due date? The article passed.

- Article 5. Will the voters approve the printing of the names of delinquent taxpayers in the Town Report together with the delinquent amount? Gerry D'Amico moved, Wendy Cashman seconded. Questions were asked about the legal ramifications of not paying taxes. Comments were made that it is public information and is available at the Town Clerk's Office and printing the names is public humiliation and there is no need to shame people. Tom Frazier mentioned that the voters voted no last year and he didn't think the voters needed to vote on this every year. John Aberth asked if there is a short fall in funds if taxes are not paid. David McShane and Tammy Legacy said the school gets paid regardless if collected and if there were not enough funds, the Board would need to borrow but the Board has not had to borrow in a couple of years. It was mentioned that the Town makes money when taxpayers do delinquent. The Town receives the 8% penalty plus 1% monthly interest. Wendy Cashman asked for a paper ballot. With a vote of 29 Yes and 43 No, the article was defeated.
- Article 6. Will the voters approve the sum of \$366,361.00 for the operation and maintenance of Town roads? Karen Hedding moved, Randy Whitney seconded. How much will the 5-Year Plan Bridge Plan cost? The Selectboard did not know. Applying for grants is a possibility. Jon Guiffre asked if we should start putting funds away for the bridge repair. Frank said not this year, maybe next year. The article passed with many ayes and a few nos.
- Article 7. Will the voters approve the sum of \$151,968.00 for the operation of the Town Administrative functions? This does not include any funds that may be approved in any other article. Sally Archer moved, Wendy Cashman seconded. Randy Whitney mentioned the budget spreadsheet does not match the amount the Board is asking for. Tammy Legacy stated that she made the mistake in the spreadsheet. She transferred the NEMRC budget into a excel spreadsheet and forgot to correct that number after the Board approved the final budget. The vote passed with all ayes.
- Article 8. Will the voters approve the sum of \$2,000.00 for the community Hall Capital Improvement Fund? Mark Gerdes moved, Fran French seconded. Randy Whitney amended the article to \$1,800.00, Carlos Montero seconded. Randy stated the Community

Hall/Senior Center Restoration Project financial reports are not in the Town Report, the Auditors did a great job of trying to get him to submit a report but he didn't. Carlos Montero said that times are tough for people and agreed with the amendment. The work is being done by volunteers. They are in the process of adding a handicap-accessible bathroom and ramp. The kitchen will be redone, too. The building is being under used. There are monthly potlucks and the building is being used for Census training. Rich Smith would like the amount to stay at \$2,000.00. It was said that the funds are controlled by the Town and the Selectboard has to authorize any work done on any town building. The question was called. The amended article was before the voters: Will the voters approve the sum of \$1,800.00 for the Community Hall Capital Improvement Fund? The article failed by hand count, 22 yes, 37 no. The original article is before the voters: Will the voters approve the sum of \$2,000.00 for the Community Hall Capital Improvement Fund? The article passed.

Moderator Lucinda Sullivan introduced Representative Anne Donahue. Anne Spoke about what is happening in the Legislature.

At 12:05p.m the lunch break began and the meeting resumed at 1:00p.m.

Article 9. Will the voters approve the sum of \$15,195.00 for the Roxbury Volunteer Fire Department? Mike Feiner moved, Karen Hedding seconded. Don Randall spoke on behalf of the Fire Department. John Dewey asked what the money is spent on. Don stated it is to the run the Fire Department, heat, electricity, phone, equipment and insurance. Randy Whitney asked what would happen if it was level funded from last year? Don said they would have to give up something, insurance went up. Randy mentioned that funds were transferred into the Highway Equipment Fund from the allocated funds. Don stated that there are extra expenses coming up this year. Pagers will need to be replaced and the radios may need to be replaced by 2013. It was asked how much is in the Fire Department Equipment Fund; Tammy said \$42,608.56. Sue D'Amico asked if that also covers the \$7,000.00 that is voted on. No, that is in the Fire Department Truck Fund. Don said that eventually the Town will need a new tanker. Tim said the Fire Department purchased a used tanker through an auction for \$3,400.00 that was paid by cash out of the fundraising money. The Fire Department did not have enough time to get the funds from the Equipment Fund. The Fire Department was asked who's name was not the Certificate of Deposits. The Town of Roxbury is the answer. Town Auditor, Fran French said that the Auditors have not received any reports on the Fire Departments fundraising accounts. The funds are not turned over to the Town, either. The Fire Department is applying for a 501C3 status. Who owns the tanker? The Fire Department said the Town does. The amendment was before the voters: Will the voters approve the sum of \$14,495.00

for the Roxbury Volunteer Fire Department? The amendment failed. The original article is before the voters: Will the voters approve the sum of \$15,195.00 for the Roxbury Volunteer Fire Department? The article passed with many ayes and two nos.

Article 10. Will the voters approve the sum of \$7,000.00 for the Roxbury Volunteer Fire Department Truck Capital Account? Karen Hedding moved, Wendy Cashman seconded. Don Randall spoke about the need for a new truck. The article passed.

Article 11. Will the voters approve the sum of \$12,000.00 for the Roxbury Free Library, to be administered by the Trustees? David Larcombe moved, Sally Archer seconded. Shelly Brown, Library Trustee, spoke on behalf of the Trustees. She thanked Sue D'Amico, Librarian, for all she has done for the Library. The Library offers a lot of programs and used more by people. John Aberth asked what the increase is for. The increase in the budget is to increase the amount of hours that Sue is paid and insurance. Randy Whitney mentioned that a lot of people ask him questions and they were wondering how people are counted at the Library. Shelly replied that the State requires people be counted in a certain way. Sue D'Amico stated that the Library is required to keep a record of how many people use the Library and due to getting busy at the Library, the count is probably less than it should be. Tom Frazier said that Sue does a great job but why not use more volunteers. Reducing services due to cost was mentioned. Jane Pincus also remarked that Sue does a wonderful job. People need service. The Trustees have received increased donations. Sandra Carrillo spoke to the voters. As a teacher at the Roxbury Village School and a community member, (this is her first time to speak as a registered voter) she brings her students to the Library. She has asked other teachers to bring their students to the Library. It was mentioned that Sue receives no benefits. It is hard to get volunteers to help, they have good intentions but it is hard to follow through with the offer. Norm Smith called the question. A request for a paper ballot was asked. The article is before the voters: Will the voters approve the sum of \$12,000 for the Roxbury Free Library, to be administered by the Trustees? The article passed 45 yes 29 no.

Article 12. To vote whether names of owners of unlicensed dogs (as of May 31, 2010) should be printed in the Town Report? Fran French moved, John Dewey seconded. Art Dickinson stated the article is no different than the delinquent tax article. John Aberth mentioned that there are a lot of unleashed dogs. Sue D'Amico stated that there is a leash law. Safety reasons were discussed; people are bitten. The article was defeated.

Article 13. Will the voters permit the Town to provide notice in the local newspaper that the Annual Town Report is available at the Town Offices, instead of mailing or hand delivering? Art Dickinson

moved, Frank French seconded. Frank Morgano said that the article is to save time and money, mailing is costly. Questions were asked about how people would know the reports were available, putting it on the website, where would the reports be available? Tim Martin stated that the fire fighters deliver the reports by hand as a drill. The fire fighters do it for free. Sally Archer amended the article to: Will the voters permit the Town to provide notice in the local newspaper, on website and in three public locations, that the Annual Town Report is available at the Town Offices, instead of mailing or hand delivering? Art Dickinson seconded. Fran French mentioned there is a schedule that must be kept, last year they were late. The Auditors requested the article be in the Town Warning. The amendment failed. The original article is before the voters: Will the voters permit the Town to provide notice in the local newspaper that the Annual Town Report is available at the Town Offices, instead of mailing or hand delivering? The article was defeated.

Article 14. That the town voters authorize an appropriation of \$300.00 to support programs of the Central Vermont Community Action Council. Art Dickinson moved, Wendy Cashman seconded. Dave McShane explained whv the article are separate this year: the

growth and development of young children and their families by offering safe, nurturing programs and services for children, families and service providers? Shelly Brown moved, Sally Archer seconded. The article passed.

- Article 19. Shall the town voters authorize expenditures for Sexual Assault Crisis Team of Washington County in the amount of \$100.00, advocacy for female and male victims of sexual violence, their family members, spouses, and friends; includes emotional, legal, and medical support, shelter, training and 24-hour Hotline? John Dewey moved, Sally Archer seconded. The article passed.
- Article 20. Shall the town voters authorize expenditures for Vermont Association for the Blind and Visually Impaired in the amount of \$100.00, since 1926, enabling Vermonters with vision problems, whether blindness or impairment, to achieve and maintain independence? Shelly Brown moved, Sue D'Amico seconded. The article passed.
- Article 21. Shall the town voters authorize expenditures for Good Beginnings of Central Vermont in the amount of \$50.00, since 1991 volunteer mothers of all ages have been offering ongoing support, education, and advocacy through home visits to all birth and adoptive families in Central Vermont? Sue D'Amico moved, Linda Maney seconded. Sue mentioned that Good Beginnings has done great work in Roxbury. The article passed.
- Article 22. Shall the town voters authorize expenditures for People's Health and Wellness Clinic in the amount of \$200.00, providing primary health care and wellness education to the uninsured and underinsured community members of Central Vermont who cannot otherwise afford these services? Dave Santi moved, Sally Archer seconded. Dave Santi said he goes to the clinic and uses their services. The article passed.
- Article 23. Shall the town voters authorize expenditures for Washington County Youth Service Bureau/Boys & Girls Club in the amount of \$250.00, Cityscape after-school program; counseling; drug/alcohol treatment; help for runaway/homeless youth; support for teen parents; teen center; reentry program for young offenders; 24-hour crisis intervention; and more? Linda Maney moved, Sally Archer seconded. John Dewey asked if this organization was the same as the Northfield Boys & Girls Club. The answer is no. the article passed.
- Article 24. Shall the town voters authorize expenditures for RSVP (Retired Senior and Volunteer Program) in the amount of \$100.00, helping meet community needs by placing RSVP volunteers in services provided by area community non-profit organizations, and supporting those organizations in the field of volunteer

management? Wendy Cashman moved, Jane Pincus seconded. Jane said that the Senior Center uses their services; they have an exercise program on Mondays. The article passed.

Article 25. Shall the town voters authorize expenditures for Central Vermont Community Land Trust in the amount of \$200.00, creating and sustaining safe, decent and affordable housing and building strong and diverse communities? David Larcombe moved, Art Dickinson seconded. Dave Larcombe spoke on behalf of the organization. Roxbury residents uses their assistance. The article passed.

Article 26. Shall the town voters authorize expenditures for Central Vermont Council on Aging in the amount of \$600.00, working to keep elders aging successfully and living independently in their homes and communities as long as possible? Wendy Cashman moved, Sally Archer seconded. The article passed.

Article 27. Shall the town voters authorize expenditures for Green Mountain Transit Agency in amount of \$387.00, meeting the special needs of transit dependent citizens including seniors, persons with disabilities, low-income residents and the general public? Art Dickinson moved, Sue D'Amico seconded. Art Dickinson moved to amend the article to Shall the town voters authorize expenditures for Green Mountain Transit Agency in amount of \$300.00, meeting the special needs of transit dependent citizens including seniors, persons with disabilities, low-income residents and the general public? Randy Whitney seconded. The amendment failed. The original article is before the voters: Shall the town voters authorize expenditures for Green Mountain Transit Agency in amount of \$387.00, meeting the special needs of transit dependent citizens including seniors, persons with disabilities, low-income residents and the general public? The article passed.

Article 28. To transact any other proper business to be brought before said meeting. Dave Larcombe moved, Wendy Cashman seconded.

Renewable energy grants were discussed. Carlos Montero mentioned projects for weatherization. The Town has applied for an energy audit grant for town buildings. An Energy Committee is needed.

Dave Santi asked the voters how many would like to keep the school in Roxbury. The majority present wanted the school to stay here.

Randy Whitney mentioned that there have been break-ins in Town and problems with speeding. He recommends the Selectboard budget for police patrol.

Wendy Cashman said that East Roxbury has crime too. There also have speeding problems on Route 12.

Robin Twombly thanked everyone for supporting the 5th & 6th grade field trip.

Linda Maney mentioned that people can save box tops for education.

Art Dickinson asked about educating our constable.

With no further business to discuss, the meeting adjourned at 2:40PM.

Respectfully submitted,
Tammy Legacy
Town Clerk



Roxbury is home to lots of flowers — including this one given out at 2010 Fourth of July Parade.

TOWN OF ROXBURY
SPECIAL TOWN MEETING MINUTES
JUNE 8, 2010

The meeting was called to order at 7:03PM by Town Moderator Lucinda Sullivan.

Article 1: Effective July 1, 2010, shall the Town of Roxbury withdraw from its agreement for membership in the union municipal district known as the Central Vermont Solid Waste Management District (CVSWMD) and enter into an agreement for solid waste management planning through membership in the Mad River Resource Management Alliance?

Selectman Chair, Shawn Neun, spoke on the reason for the article before the voters. The Selectboard's opinion is the Towns of Northfield and Roxbury are a community. Dave McShane has done a lot of research on whether the Town should join Mad River Resource Management Alliance (MRRMA) as Northfield has done or to stay with CVSWMD. Tim Martin and Shawn both agreed that joining MRRMA is more beneficial to the Town of Roxbury.

Gloria Gerdes asked who owns the Northfield Depot which Roxbury residents use. Northfield owns the Depot and contracts out the work.

Sue D'Amico read a letter from Roxbury's representative to CVSWMD, Gerry D'Amico. Gerry would like the Town to remain with CVSWMD. Gerry stated in his letter that he thought the warning was illegal. Town Clerk, Tammy Legacy, replied that she has asked the Secretary of States about Gerry's concern and was told the warning is legal. Also, Gerry said that the 30 days for petitioning the article if passed did not work if the effective date is July 1, 2010.

Dave McShane explained the pros/cons of joining MRRMA and the benefits of remaining with CVSWMD and the disadvantages of remaining with CVSWMD.

There was discussion on the cost of leaving CVSWMD. If Roxbury leaves CVSWMD, Roxbury possibly may not have to pay the dues owed. Many more questions were asked.

Steve Twombly moved to amend the article so that the effective date would be July 8, 2010. Sally Archer seconded the amendment.

The amended article is before the voters:

Effective July 8, 2010, shall the Town of Roxbury withdraw from its agreement for membership in the union municipal district known as the Central Vermont Solid Waste Management District (CVSWMD) and enter into an agreement for solid waste management planning

through membership in the Mad River Resource Management Alliance?

The amended article passed.

Article 1 is before the voters:

Effective July 8, 2010, shall the Town of Roxbury withdraw from its agreement for membership in the union municipal district known as the Central Vermont Solid Waste Management District (CVSWMD) and enter into an agreement for solid waste management planning through membership in the Mad River Resource Management Alliance?

The article passed with many ayes and 1 no.

Tammy Legacy moved to adjourn the meeting, Lucinda seconded. All in favor.

The meeting adjourned at 7:32PM.

Respectfully submitted,

Tammy Legacy
Town Clerk

TOWN OF ROXBURY
SPECIAL TOWN MEETING MINUTES
AUGUST 10, 2010

The meeting was called to order at 7:02PM by Town Moderator Lucinda Sullivan.

Lucinda explained the rules for the meeting.

Article 1: Effective July 1, 2010, shall the Town of Roxbury withdraw from its agreement for membership in the union municipal district known as the Central Vermont Solid Waste Management District (CVSWMD) and enter into an agreement for solid waste management planning through membership in the Mad River Resource Management Alliance?

Gerry D'Amico spoke. He stated that the town was obligated to pay the dues to Central Vermont Solid Waste Management District (CVSWMD). Roxbury was a member as of July 1, 2010 of CVSWMD. He said it does not make sense to pay Mad River Resource Management Alliance (MRRMA) and CVSWMD. Another financial obligation to CVSWMD is to pay Roxbury's share of the debt which is approximately \$1,800.00. Roxbury does not know if they would have to pay any portion of debt to MRRMA.

Frank Morgano asked the Selectboard to explain the reasons for joining MRRMA.

Dave McShane, Selectman, said the original vote in June would have had Roxbury joining MRRMA on July 1st. He does not know if Roxbury would have to pay any debt.

The Selectboard does not have a legal opinion on whether Roxbury would have to pay CVSWMD but Gerry D'Amico stated that he did.

Dave said the reasons why they would like to join MRRMA were because CVSWMD closed the trash depot in Northfield. The majority of Roxbury residents take their trash to the depot. Northfield voted to remove from the CVSWMD. If Roxbury stays with CVSWMD, Roxbury residents may have to pay a surcharge if using the depot.

Mike Feiner asked what the current obligation is. Dave replied that if we join MRRMA Roxbury would have to pay MRRMA but not necessarily pay CVSWMD.

Dave Santi stated that if CVSWMD can dump depots, why should Roxbury stay with them.

Sue D'Amico asked who is operating the Northfield Depot. Dave said Earthwaste Systems is. Sue asked if we take our trash to the Northfield Depot, would Roxbury be charged extra. There could be a \$30.00 per ton surcharge.

CVSWMD has a \$2,000,000.00 budget and they do not haul trash.

Benefits for both organizations were discussed.

Ruth D'Amico talked about the legal aspects if Roxbury left CVSWMD. Linda Maney asked about waiting until March town meeting to decide.

Other questions and comments were asked by residents. It was mentioned that when the Northfield Depot closed, Roxbury residents were left hanging which put a burden on residents.

Dave Santi said that Roxbury does not have to be in any solid waste management district and suggested Roxbury look into that. Voters discussed what the best district to belong to or not to belong to any. Northfield is a member of MRRMA. It was mentioned that there is a private hauler that comes to Roxbury to pick up trash and recycling.

Frank moved the question. The question was called.

Article 1 is before the voters:

Effective July 8, 2010, shall the Town of Roxbury withdraw from its agreement for membership in the union municipal district known as the Central Vermont Solid Waste Management District (CVSWMD) and enter into an agreement for solid waste management planning through membership in the Mad River Resource Management Alliance?

Sally Archer requested paper ballot. The request failed.

The article passed with a hand count of 22 Yes and 14 No.

The meeting adjourned at 7:52PM.

Respectfully submitted,
Tammy Legacy
Town Clerk

Roxbury School
District
Proposed Budget
FY 2012

\$1,540,297.00

Decrease of 5.93%

Tax Rate = 1.3572
Decrease of 7.22%

School Directors Report 2010

The Roxbury Village School has enjoyed a vibrant year. Of course the education of our children is largely driven by our wonderfully dedicated Teachers & Staff - thanks to you all! It has been a pleasure to have our current Principal, Denise Maurice, continue in her leadership role at the school. Denise has proven herself to be a hard working principal who has provided some much needed stability for students and staff alike.

The year has provided some exciting opportunities to enrich the programming at the Roxbury Village School through grant funding. In the past year we have had a visit from Earth Walk, an "artist in residence" featuring a very engaging poet, and we've enjoyed other artist visits as well. With grant assistance from Food Works Gardens for Learning Grant Program, and with support from the Roxbury Free Library, the school was pleased to host the Roxbury Roots Kids Summer Gardening and Reading Program. With grant funding and community effort the school garden space was expanded and the program was spectacularly attended and very well received. The garden was brought full circle to the students when we celebrated with a Harvest Lunch in the Fall.

The garden program was one example of how fertile the collaboration can be between the school and its community. From help with the school grounds, to helping distribute books, to involvement with classroom activities, our school is greatly enriched by community involvement. We also enjoy being able to give back to our community, as with the annual Holiday Lunch which is a festive opportunity for Roxbury Seniors to get a flavor of the Village School spirit. Thanks to all of you! We couldn't do it without the commitment of community and staff alike to Roxbury's children, and thereby to our future.

In another way of looking to the future, we have used some long term maintenance funds to address some substantive issues with the school building. By now I am sure you have all noticed that the roof was painted, followed by the entire exterior of the building. We also completed some interior tile work this year, and began the replacement of some old ineffective & inefficient windows. We are pleased to see our building being able to convey a sense of respect for the important work that takes place within, and plan to continue to be responsible stewards of the property.

The Roxbury School Board has had more changes in membership at a time of substantive talk about the sustainability of Vermont's current educational system. The economic climate has spurred important legislative actions in the 2010 session which have made it a busy year for the board in striving to understand and consider how this new legislation could impact our district.

Last year at this time we shared the results of a community forum where merging at the Supervisory Union level had come out as one of the highest priorities for those in attendance as we looked at how to make our small school district more cost effective and sustainable. This year we can report on having held a follow up forum where we discussed some legislative actions which created a framework for one way in which that

could happen. We also provided some information regarding the other top options from our previous forum which included creating a magnet school, and setting a tuition cap for secondary students. Our hope was for those in attendance to come away with a better understanding of the challenges and possible opportunities facing our district.

Throughout all of this action at the Legislative level we have had the benefit of the seasoned leadership of our Superintendent, Dr. Michele Fagan. She and her team have helped the board with a great deal of discussion and interpretation around these recent changes as well as helping to keep us on track with the day to day needs of our district.

As always, and most importantly, we have worked toward providing the best education possible to the children of Roxbury while approaching that goal in a fiscally responsible way. We value input regarding how that is accomplished, and collaboration in achieving those goals. We appreciate all those who have taken the time to contribute to the school in so many ways.

Respectfully Submitted,
Deborah Van Ness, Chair
On behalf of the Roxbury School Board:
David Larcombe, Vice Chair
Jon Guiffre, Clerk



STATISTICAL DATA - ROXBURY SCHOOL DISTRICT

Table 1 - Opening Day Enrollment Figures

	2004-2005	2005-2006	2006-2007	2007-2008	2008-2009	2009-2010	2010-2011
<u>Grade</u>							
PreK	9	9	2	6	0	6	0
Kindergarten	4	15	8	5	8	7	9
1	14	5	15	8	3	7	6
2	9	13	4	13	8	3	8
3	6	9	11	6	13	6	2
4	7	6	8	8	6	12	6
5	9	5	4	8	7	6	9
6	7	6	5	4	6	5	5
Totals	65	68	57	58	51	52	45

Table 2 - Opening Day Tuition Students

	2004-2005	2005-2006	2006-2007	2007-2008	2008-2009	2009-2010	2010-2011	Projected 2011-2012
<u>School/Programs</u>								
Barre Regional Voc. Ctr.	0	0	0	0	0	0	1	1
Crossett Brook Middle Sch	0	1	1	0	0	0	0	0
Harwood Union HS #19	2	1	0	2	1	0	0	1
Montpelier High School	4	2	2	4	4	2	0	2
Northfield Elementary	1	0	0	0	0	0	0	0
Northfield Middle/High	29	32	32	29	28	25	24	26
Randolph Union HS #2	9	9	10	6	8	4	2	2
Randolph Career Tech. Ctr	2	3	2	0	4	2	2	3
Twinfield Union HS #3	1	0	0	0	0	0	0	0
U-32	7	7	7	6	8	6	2	4
White Pines	2	0	0	0	0	0	0	0
Williamstown Middle/High	0	0	2	1	0	0	0	0
RAVEN Program	0	0	1	1	1	1	0	0
Spec. Ed. (Out of District)	-	-	2	1	4	5	3	3
Totals	57	55	59	50	58	45	34	42

Roxbury Town School District - FY2012 Budget Expenses							
	January 10, 2011	FY 2010 Budget	Sept. 16 FY2010 Actual	FY2011 Budget	Fy2012 Proposed	\$ Change	% Change
	Elementary Programs		UNAUDITED				
1100	General Elementary						
	Teacher Salaries	\$ 178,751	\$ 188,471	\$ 197,374	\$ 185,903		
	Aide Salaries	4,011	1,983	-	2,000		
	Substitute Salaries	7,000	6,694	7,500	7,500		
	Health Insurance	52,939	61,044	62,809	45,263		
	Dental Insurance	2,300	988	2,300	2,450		
	Long Term Disability	715	803	873	744		
	Social Security	14,178	13,426	15,673	14,948		
	Life Insurance	413	112	343	200		
	Retirement	-	79	-	-		
	Workers Comp Insurance	1,609	1,244	1,800	2,015		
	Unemployment Insurance	630	554	776	800		
	Repairs & Maintenance	200	115	200	200		
	Field Trips	1,000	1,481	1,000	1,000		
	Supplies & Materials	6,400	4,698	6,400	6,400		
	Books	6,000	4,897	6,000	6,000		
	Software	1,000	720	1,000	1,000		
	Total General Elementary	\$ 277,146	\$ 287,309	\$ 304,048	\$ 276,423	(27,625)	-9.09%
1201	Special Education --Elementary						
	Teacher Salaries	\$ 26,147	\$ 26,860	\$ 28,081	\$ 31,950		
	Aide Salaries	28,083	30,863	32,218	26,789		
	Substitute Salaries	1,000	5,040	1,800	5,500		
	Health Insurance	3,655	9,646	9,714	11,177		
	Long Term Disability	105	103	120	110		
	Dental Insurance	300	-	-	300		
	Social Security	4,149	4,780	4,751	4,914		
	Life Insurance	75	28	46	46		
	Retirement	1,123	1,515	-	1,291		
	Workers Comp Insurance	549	488	616	655		
	Unemployment Insurance	525	323	337	480		
	Purchased Prof. Services	7,000	-	6,000	6,000		
	Supplies & Materials	800	759	1,600	1,000		
	Equipment	1,000	-	-	-		
	Total Special Education	\$ 74,510	\$ 80,405	\$ 85,283	\$ 90,212	4,929	5.78%

		FY 2010 Budget	Fy2010 Actual	Fy2011 Budget	Fy2012 Proposed	\$ Change	% Change
			UNAUDITED				
2120	<u>Guidance Services--Elementary</u>						
	Salaries	\$ -	\$ -	\$ -	\$ 15,332		
	Health Insurance	\$ -	\$ -	\$ -	\$ 2,532		
	Long Term Disability/Life Ins	-	-	-	67		
	Social Security	-	-	-	1,173		
	Workers Comp Insurance	-	-	-	153		
	Unemployment Insurance	-	-	-	160		
	Supplies & Materials	300	289	300	300		
	Total Guidance	\$ 300	\$ 289	\$ 300	\$ 19,717	19,417	6472.41%
2130	<u>Nurse Services--Elementary</u>						
	Salaries	\$ 9,898	\$ 9,904	\$ 10,087	\$ 10,289		
	Long Term Disability/Life Ins	65	39	70	62		
	Dental Insurance	100	-	-	-		
	Social Security	757	758	772	787		
	Workers Comp Insurance	89	89	101	112		
	Unemployment Insurance	131	108	112	160		
	Travel		150				
	Supplies & Materials	500	395	1,500	1,500		
	Total Nurse Services	\$ 11,540	\$ 11,443	\$ 12,642	\$ 12,910	268	2.12%
2150	<u>Speech Services--Elementary</u>						
	Purchased Prof. Services	30,000	3,623	25,000	20,000		
	Supplies & Materials	250	229	-	-		
	Total Speech Services	\$ 30,250	\$ 3,852	\$ 25,000	\$ 20,000	(5,000)	-20.00%
2210	<u>Staff Development--Elementary</u>						
	Tuition Reimbursement	\$ 9,000	\$ 7,698	\$ 10,500	\$ 9,500		
	Total Staff Development	\$ 9,000	\$ 7,698	\$ 10,500	\$ 9,500	(1,000)	-9.52%

		FY 2010 Budget	Fy2010 Actual	Fy2011 Budget	Fy2012 Proposed	\$ Change	% Change
			UNAUDITED				
2220	<u>Library Services--Elementary</u>						
	Salaries	\$ 8,228	\$ 8,241	\$ 8,634	\$ 8,807		
	Health Insurance	3,211	3,211	3,238	3,193		
	Long Term Disability	33	32	35	39		
	Dental Insurance	100	97	100	50		
	Social Security	629	631	661	730		
	Life Insurance	21	-	27	27		
	Workers Comp Insurance	74	74	77	96		
	Unemployment Insurance	64	108	112	160		
	Supplies & Materials	300	281	300	300		
	Books	2,500	2,358	2,500	2,500		
	Total Library Services	\$ 15,160	\$ 15,033	\$ 15,684	\$ 15,902	218	1.39%
2221	<u>Technology--Elementary</u>						
	Repairs & Maintenance	\$ 2,475	\$ 101	\$ 2,475	\$ 2,475		
	Cable Fees	2,448	-	2,448	-		
	Training Fees	750	-	750	750		
	Supplies & Software	1,315	1,775	1,315	1,315		
	Computer Equipment	2,550	1,992	2,550	2,550		
	Total Technology	\$ 9,538	\$ 3,868	\$ 9,538	\$ 7,090	(2,448)	-25.67%
2410	<u>Principal's Office</u>						
	Salaries	\$ 32,000	\$ 32,500	\$ 32,640	\$ 33,619		
	Secretarial Salaries	28,534	29,122	29,104	29,686		
	Health Insurance	22,290	23,025	23,855	24,571		
	Dental Insurance	750	176	750	750		
	Long Term Disability	209	123	252	255		
	Life Insurance	168	122	168	130		
	Social Security	4,632	4,055	4,723	4,843		
	Municipal Retirement	1,141	1,423	1,164	1,187		
	Workers Comp Insurance	470	384	563	638		
	Unemployment Insurance	262	111	223	320		
	Copier Lease & Supplies	5,000	4,861	5,000	5,000		
	Postage	700	413	700	700		
	Travel	500	443	600	600		
	Supplies & Materials	2,000	1,927	2,500	2,500		
	Dues & Fees	350	350	350	350		
	Total Principals Office	\$ 99,005	\$ 99,035	\$ 102,592	\$ 105,149	2,557	2.49%

		FY 2010 Budget	Fy2010 Actual	Fy2011 Budget	Fy2012 Proposed	\$ Change	% Change
			UNAUDITED				
2600	<u>Operations & Maintenance</u>						
	All Salaries (summer and subs)	\$ 15,000	\$ 13,147	\$ 14,500	\$ 14,500		
	Social Security	1,148	1,004	1,109	1,109		
	Municipal Retirement	527	-	-	-		
	Workers Comp Insurance	1,350	1,151	1,350	1,200		
	Unemployment Insurance	105	108	112	242		
	Travel	-	-	200	200		
	Water Testing	1,500	899	1,000	1,000		
	Rubbish Removal	3,100	3,657	4,000	4,000		
	Repairs & Maintenance	11,500	7,261	11,500	11,500		
	Property Insurance	1,300	770	1,500	1,500		
	Telephone	2,100	4,912	4,500	5,000		
	Custodial Supplies	4,700	3,528	4,700	4,700		
	Electricity	8,500	8,045	8,500	8,500		
	Heating Oil	11,000	10,702	11,000	11,000		
	Snow Removal & Mowing	1,600	2,440	2,500	2,500		
	Grounds Maintenance	1,500	1,262	1,500	1,500		
	Perpetual Easement - Ellis	300	1,193	-	400		
	Total Operations & Maintenance	\$ 65,230	\$ 60,079	\$ 67,971	\$ 68,851	880	1.29%
3000	<u>Food Services</u>						
	Food Service Program Support	\$ 2,000	\$ 2,000	\$ 2,000	\$ 2,000	-	
5100	<u>Long Term Debt</u>						
	Interest	\$ 1,553	\$ 2,595	\$ 518	\$ -		
	Principal	15,000	15,000	15,000	-		
	Total Long Term Debt	\$ 16,553	\$ 17,595	\$ 15,518	\$ -	(15,518)	-100.00%
	TOTAL ELEMENTARY	\$ 610,233	\$ 588,606	\$ 651,075	\$ 627,755	\$(23,320)	-3.58%

		FY 2010 Budget	Fy2010 Actual	Fy2011 Budget	Fy2012 Proposed	\$ Change	% Change
			UNAUDITED				
	Secondary Programs						
1100	Regular Tuition	558,300	421,415	482,400	430,000		
	Tuition Contingency	0	0	0	25,000		
1300	Vocational Tuition	39,729	42,510	49,349	54,000		
	Total Tuition	\$ 598,029	\$ 463,925	\$ 531,749	\$ 509,000	(22,749)	-4.28%
1206	Special Education						
	Outside Placements	189,000	233,050	201,520	147,156		
	Outside Placements Transportation	30,000	52,129	30,000	55,143		
	Total Special Education	\$ 219,000	\$ 285,179	\$ 231,520	\$ 202,299	(29,221)	-12.62%
	TOTAL SECONDARY	\$ 817,029	\$ 749,104	\$ 763,269	\$ 711,299	(51,970)	-6.81%
	Programs Affecting All Students						
2310	Board						
	Salaries - \$400 each member	\$ 1,200	\$ 1,200	\$ 1,200	\$ 1,200		
	Legal	2,000	814	5,000	5,000		
	Audit	-	-	10,000	-		
	Liability Insurance	2,300	2,367	1,200	2,500		
	Advertising	2,000	1,546	4,000	4,000		
	Supplies & Materials	130	168	400	400		
	Dues & Fees	1,200	1,220	1,200	1,200		
	Total Board	\$ 8,830	\$ 7,315	\$ 23,000	\$ 14,300	(8,700)	-37.83%
2320	Supervisory Union						
	Superintendents Office	\$ 35,446	\$ 35,446	\$ 32,080	\$ 27,143		
	Special Education Assessment	19,388	19,388	\$ 17,213	\$ 14,761		
	Fiscal Services Assessment	17,528	17,528	\$ 16,132	\$ 15,608		
	Technology Assessment	17,568	17,568	\$ 16,146	\$ 12,731		
	Total Supervisory Union	\$ 89,930	\$ 89,930	\$ 81,571	\$ 70,243	(11,328)	-13.89%
2520	Fiscal Services						
	Treasurer Stipend	\$ 500	\$ 500	\$ 500	\$ 500		
	Service Charges		\$ 10				
	Fidelity Bonds	300	-	-	-		
	Interest - Tax Anticipation	4,000	2,603	3,000	7,200		
	Total Fiscal Services	\$ 4,800	\$ 3,113	\$ 3,500	\$ 7,700	4,200	120.00%

		FY 2010 Budget	Fy2010 Actual	Fy2011 Budget	Fy2012 Proposed	\$ Change	% Change
			UNAUDITED				
2700	<u>Pupil Transportation</u>						
	Contracted Transportation	\$ 28,000	\$ 24,983	\$ 29,000	\$ 26,000		
	Total Pupil Transportation	\$ 28,000	\$ 24,983	\$ 29,000	\$ 26,000	(3,000)	-10.34%
	Total All Student Programs	\$ 131,560	\$ 125,341	\$ 137,071	\$ 118,243	\$(18,828)	-13.74%
	Grand Total Expenditures	\$1,558,822	\$ 1,463,051	\$ 1,551,415	\$ 1,457,297	(94,118)	-6.07%
	General Fund						
	Special Revenue Funds - Grants	\$ 88,000	\$ -	\$ 86,000	\$ 83,000		
		\$1,646,822	\$ 1,463,051	\$ 1,637,415	\$ 1,540,297	(97,118)	-5.93%

Roxbury School District					
Proposed FY 2012 Revenue Budget					
January 10, 2011					
		Unaudited			
	FY 2010 Budget	Fy 2010 Actual	FY 2011 Budget	FY 2012 Proposed	
Revenues:					
Transportation Aid	\$ 11,600	\$ 10,643	\$ 15,000	\$ 11,000	
Small Schools Grant	70,000	68,941	46,200	46,200	
Interest Income	4,000	4,544	3,800	8,500	
Prior Year Refunds	0	24,285	0	0	
Mainstream Block Grant	38,000	38,044	39,166	33,573	
Special Ed Reimbursements	144,500	154,103	155,000	146,000	
Essential Early Ed.	8,036	936	7,568	500	
E-Rate Funds	0	2,891	0	0	
FY 2009 Uncollected Taxes	0	6,789	0	0	
WSSU Refund	0	5,342	0	0	
Education Spending	1,283,086	1,283,086	1,284,681	1,211,524	
	1,559,222	1,599,604	1,551,415	1,457,297	-6.07%
Grant Revenues	88,000		86,000	83,000	
	\$ 1,647,222		\$ 1,637,415	\$ 1,540,297	-5.93%

Comparative Data for Cost-Effectiveness
16 V.S.A. § 165(a)(2)(K)

School: Roxbury Village School
S.U.: Washington South S.U.

A list of schools and school districts in each cohort may be found on the DOE website under "School Data and Reports":
<http://www.state.vt.us/educ/>

FY2010 School Level Data

Cohort Description: Elementary school, enrollment < 100
 (47 schools in cohort)

Cohort Rank by Enrollment (1 is largest)
 33 out of 47

School level data		Grades Offered	Enrollment	Total Teachers	Total Administrators	Stu / Tchrr Ratio	Stu / Admin Ratio	Tchr / Admin Ratio
Smaller →	Whiting Village School	PK - 6	41	3.32	0.40	12.35	102.50	8.30
	Ripton Elementary School	PK - 6	44	4.90	0.60	8.98	73.33	8.17
	Sunderland Elem. School	K - 6	47	6.40	1.00	7.34	47.00	6.40
	Roxbury Village School	PK - 6	49	4.60	0.50	10.65	98.00	9.20
← Larger	Tinmouth Elementary School	PK - 6	51	5.14	0.80	9.92	63.75	6.43
	Woodbury Elementary School	K - 6	51	5.80	0.60	8.79	85.00	9.67
	North Hero Elementary School	K - 6	58	6.40	0.40	9.06	145.00	16.00
Averaged SCHOOL cohort data			61.91	6.46	0.76	9.58	81.51	8.51

School District: Roxbury
LEA ID: T170

Special education expenditures vary substantially from district to district and year to year. Therefore, they have been excluded from these figures.

The portion of current expenditures made by supervisory unions on behalf of districts varies greatly. This year's figures include district assessments to SUs. Doing so makes districts more comparable to each other. The consequence is that THESE FIGURES ARE ONLY COMPARABLE TO FIGURES USED IN THE SIMILAR FILES FOR FY10 and FY11.

FY2009 School District Data

Cohort Description: Elementary school district, FY2009 FTE < 100
 (50 school districts in cohort)

Grades offered in School District Student FTE enrolled in school district Current expenditures per student FTE EXCLUDING special education costs

Cohort Rank by FTE
 (1 is largest)
 35 out of 50

School district data (local, union, or joint district)			Grades offered in School District	Student FTE enrolled in school district	Current expenditures per student FTE EXCLUDING special education costs
Smaller →	Peacham		PK-6	38.00	\$17,923
	Ripton		PK-6	44.41	\$16,168
	Sunderland		K-6	46.55	\$15,023
	Roxbury		PK-6	48.08	\$12,280
← Larger	Woodbury		K-6	51.85	\$14,574
	Tinmouth		PK-6	53.88	\$11,074
	Bridgewater		K-6	55.27	\$12,187
Averaged SCHOOL DISTRICT cohort data				62.29	\$13,210

Current expenditures are an effort to calculate an amount per FTE spent by a district on students enrolled in that district. This figure excludes tuitions and assessments paid to other providers, construction and equipment costs, debt service, adult education, and community service.

FY2011 School District Data

		School district tax rate			Total municipal tax rate, K-12, consisting of prorated member district rates		
		SD	SD Education	SD Equalized	MUN Equalized	MUN Common	MUN Actual
		Grades offered in School District	Equalized Pupils	Spending per Equalized Pupil	Homestead Ed tax rate	Level of Appraisal	Homestead Ed tax rate
LEA ID School District					Use these tax rates to compare towns rates.		
Smaller →	T180 Salisbury	K-6	91.33	13,288.98	1.3376	1.4252	0.7978
	T137 Newfane	K-6	92.50	11,207.10	1.1281	1.2552	0.9841
	T034 Brownington	K-6	101.24	9,462.59	0.9525	1.0339	1.0821
	T170 Roxbury	PK-6	102.79	12,498.11	1.2580	1.2580	0.8601
← Larger	T143 North Hero	K-6	104.28	12,451.96	1.2534	1.2534	0.8283
	T151 Peacham	PK-6	105.24	14,036.71	1.4129	1.4129	0.9950
	T197 Stockbridge	PK-6	111.80	11,989.94	1.2069	1.2069	0.8654

The Legislature has required the Department of Education to provide this information per the following statute:

16 V.S.A. § 165(a)(2) The school, at least annually, reports student performance results to community members in a format selected by the school board. . . . The school report shall include:

(K) data provided by the commissioner which enable a comparison with other schools, or school districts if school level data are not available, for cost-effectiveness. The commissioner shall establish which data are to be included pursuant to this subdivision and, notwithstanding that the other elements of the report are to be presented in a format selected by the school board, shall develop a common format to be used by each school in presenting the data to community members. The commissioner shall provide the most recent data available to each school no later than October 1 of each year. Data to be presented may include student-to-teacher ratio, administrator-to-student ratio, administrator-to-teacher ratio, and cost per pupil.

District: **Roxbury**
County: **Washington****T170**
Washington SouthEssex 1.68% education
amount. See note at
bottom of pageFinal estimated homestead
base rate for FY2012. See
note at bottom of page

8,544

0.87

Expenditures

		FY2009	FY2010	FY2011	FY2012	
1.	Budget (local budget, including special programs, full technical center expenditures, and any Act 144 expenditures)	\$1,616,536	\$1,646,822	\$1,637,415	\$1,540,297	1.
2.	plus Sum of separately warned articles passed at town meeting	-	-	-	-	2.
3.	minus Act 144 Expenditures, to be excluded from Education Spending	-	-	-	-	3.
4.	Act 68 locally adopted or warned budget	\$1,616,536	\$1,646,822	\$1,637,415	\$1,540,297	4.
5.	plus Obligation to a Regional Technical Center School District if any	-	-	-	-	5.
6.	plus Prior year deficit reduction if not included in expenditure budget	-	-	-	-	6.
7.	Gross Act 68 Budget	\$1,616,536	\$1,646,822	\$1,637,415	\$1,540,297	7.
8.	S.U. assessment (included in local budget) - informational data	-	-	-	-	8.
9.	Prior year deficit reduction (if included in expenditure budget) - informational data	-	-	-	-	9.
Revenues						
10.	Local revenues (categorical grants, donations, tuitions, surplus, etc., including local Act 144 tax revenues)	\$310,980	\$363,736	\$352,734	\$328,773	10.
11.	plus Capital debt aid for eligible projects pre-existing Act 60	-	-	-	-	11.
12.	plus Prior year deficit reduction if included in revenues (negative revenue instead of expenditures)	-	-	-	-	12.
13.	minus All Act 144 revenues, including local Act 144 tax revenues	-	-	-	-	13.
14.	Total local revenues	\$310,980	\$363,736	\$352,734	\$328,773	14.
15.	Education Spending	\$1,305,556	\$1,283,086	\$1,284,681	\$1,211,524	15.
16.	Equalized Pupils (Act 130 count is by school district)	109.11	106.52	102.79	99.19	16.

17.	Education Spending per Equalized Pupil	\$11,965.50	\$12,045.49	\$12,498.11	\$12,214	17.
18.	minus Less net eligible construction costs (or P&I) per equalized pupil	\$161.26	\$155.40	\$150.97	-	18.
19.	minus Less share of SpEd costs in excess of \$50,000 for an individual	-	-	-	-	19.
20.	minus Less amount of deficit if deficit is solely attributable to tuitions paid to public schools for grades the district does not operate for new students who moved to the district after the budget was passed	-	-	-	-	20.
21.	minus Less SpEd costs if excess is solely attributable to new SpEd spending if district has 20 or fewer equalized pupils	-	-	-	-	21.
22.	minus Less planning costs for merger of small schools	-	-	-	-	22.
23.	plus Excess Spending per Equalized Pupil over threshold (if any)	threshold = \$13,267	threshold = \$13,864	threshold = \$14,549	threshold = \$14,733	23.
24.	Per pupil figure used for calculating District Adjustment	\$11,965	\$12,045	\$12,498	\$12,214	24.
25.	District spending adjustment (minimum of 100%) (\$12,214 / \$8,544)	145.743% based on \$8,210	140.982% based on \$8,544	146.279% based on \$8,544	142.956% based on \$8,544	25.

Prorating the local tax rate

26.	Anticipated district equalized homestead tax rate to be prorated (142.956% x \$0.87)	\$1.2680 based on \$0.87	\$1.2124 based on \$0.86	\$1.2580 based on \$0.86	\$1.2437 based on \$0.87	26.
27.	Percent of Roxbury equalized pupils not in a union school district	100.000%	100.000%	100.000%	100.000%	27.
28.	Portion of district eq homestead rate to be assessed by town (100.000% x \$1.24)	\$1.2680	\$1.2124	\$1.2580	\$1.2437	28.
29.	Common Level of Appraisal (CLA)	77.20%	72.06%	86.01%	91.64%	29.
30.	Portion of actual district homestead rate to be assessed by town (1.244 / 91.64%)	\$1.6425 based on \$0.87	\$1.6825 based on \$0.86	\$1.4626 based on \$0.86	\$1.3572 based on \$0.87	30.
<p>If the district belongs to a union school district, this is only a PARTIAL homestead tax rate. The tax rate shown represents the estimated portion of the final homestead tax rate due to spending for students who do not belong to a union school district. The same holds true for the income cap percentage.</p>						
31.	Anticipated income cap percent to be prorated (142.956% x 1.80%)	2.62% based on 1.80%	2.54% based on 1.80%	2.63% based on 1.80%	2.57% based on 1.80%	31.
32.	Portion of district income cap percent applied by State (100.000% x 2.57%)	2.62% based on 1.80%	2.54% based on 1.80%	2.63% based on 1.80%	2.57% based on 1.80%	32.
33.	Percent of equalized pupils at union 1	-	-	-	-	33.
34.		-	-	-	-	34.

- Due to the ongoing fiscal crisis, there is uncertainty as to what the base education amount and homestead tax rate should be. Our current recommendation is to use \$8,544 and \$0.87, respectively. A district may choose to use different parameters if so desired. Final figures will be set by the Legislature and approved by the Governor.

- The base income percentage cap is 1.80%.

Washington South Supervisory Union						
FY 2012 Budget						
	December 6, 2010	unaudited				
	FY 10	FY 10	FY 11	FY 12		
	Budget	Actual	Budget	Proposed	\$ Change	% Change
Superintendent's Office	\$ 253,503	\$ 238,482	\$ 251,695	\$ 247,402		
Fiscal Services	\$ 125,354	\$ 124,451	\$ 126,575	\$ 142,028		
Technology	\$ 125,639	\$ 122,522	\$ 126,688	\$ 115,853		
Special Education Administration	\$ 138,654	\$ 131,296	\$ 135,057	\$ 134,323		
Total Expenditures	\$ 643,150	\$ 616,751	\$ 640,015	\$ 639,605	\$ (410)	-0.08%
Revenue's						
Prior Year Refunds	\$ -	\$ 1,010	\$ -	\$ -		
Interest on Investments	\$ 1,100	\$ 588	\$ 300	\$ 400		
Total Revenues	\$ 1,100	\$ 1,598	\$ 300	\$ 400	\$ 100	33.33%
Assessed to Districts	\$ 642,050	\$ 642,048	\$ 639,715	\$ 639,205	\$ (510)	-0.08%
Northfield Allocation	\$ 552,121	\$ 552,116	\$ 569,416	\$ 568,962	\$ (454)	-0.08%
Roxbury Allocation	\$ 89,929	\$ 89,932	\$ 70,299	\$ 70,243	\$ (56)	-0.08%
Total District Allocation	\$ 642,050	\$ 642,048	\$ 639,715	\$ 639,205	\$ (510)	-0.08%
AVERAGE DAILY MEMBERSHIP	FY 2010 Budget		Estimate FY 2011	Estimate FY 2012	FY 2012 %	
Northfield Average Daily Membership (ADM)	85.99%		87.25%	635.44	89.01%	
Roxbury Average Daily Membership (ADM)	14.01%		12.75%	78.45	10.99%	
Total WSSU ADM Allocation	100.00%		100.00%	713.89	100.00%	

Note: A copy of the detailed Washington South Supervisory Union FY12 Budget Report is available in its entirety at the Washington South Supervisory Union office.

INDEX

AUDITORS' STATEMENT	34
CEMETERY ASSOCIATION REPORT	36
COLLECTOR OF CURRENT TAXES	23
DELINQUENT TAX REPORT	24
GRAND LIST ABSTRACT	31
INVENTORY OF TOWN PROPERTY	29
MAD RIVER RESOURCE MANAGEMENT	48
NOTES TO FINANCIAL STATEMENT	34
CENTRAL VT REGIONAL PLANNING COMMISSION	46
ROXBURY COMMUNITY HALL FUND	37
ROXBURY FOOD SHELF	40
ROXBURY FREE LIBRARY	43
ROXBURY GREEN-UP DAY	41
ROXBURY HISTORICAL SOCIETY	42
ROXBURY PLANNING COMMISSION	47
ROXBURY SENIOR CENTER	45
ROXBURY VOLUNTEER FIRE DEPARTMENT	38
SCHOOL REPORTS:	
SCHOOL DIRECTORS' REPORT	65
SCHOOL DISTRICT BUDGET REPORT	68
SCHOOL DISTRICT REVENUE REPORT	74
STATISTICAL DATA	67
SELECTBOARD REPORT	7
SPONSORS OF FLAGS	9
TAX RATES	21
TOWN BALANCE SHEET	16
TOWN BUDGET	10
TOWN RESERVES	17
TOWN CLERK'S REPORT	25
TOWN CLERK REVENUE	26
TOWN MEETING 2010 MINUTES	51
TOWN OFFICIALS	5
TOWN LISTERS' REPORT	30
VITAL STATISTICS	27
WARNINGS	1

**TOWN OF ROXBURY
P. O. Box 53
ROXBURY, VT 05669**



Celebrating the Fourth of July 2010- The parade is ending, but other festivities will go on - barbeque, games, book sale and fun. Flags Donated to the town (see page 9).